

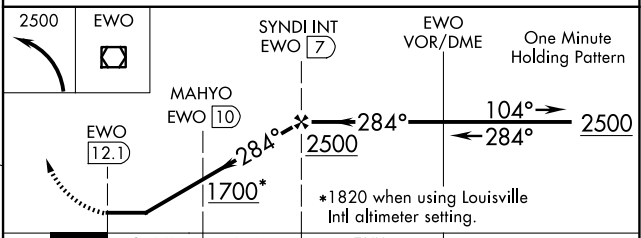
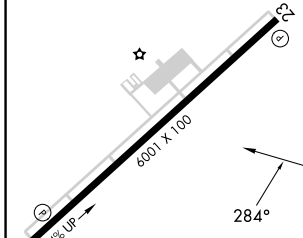
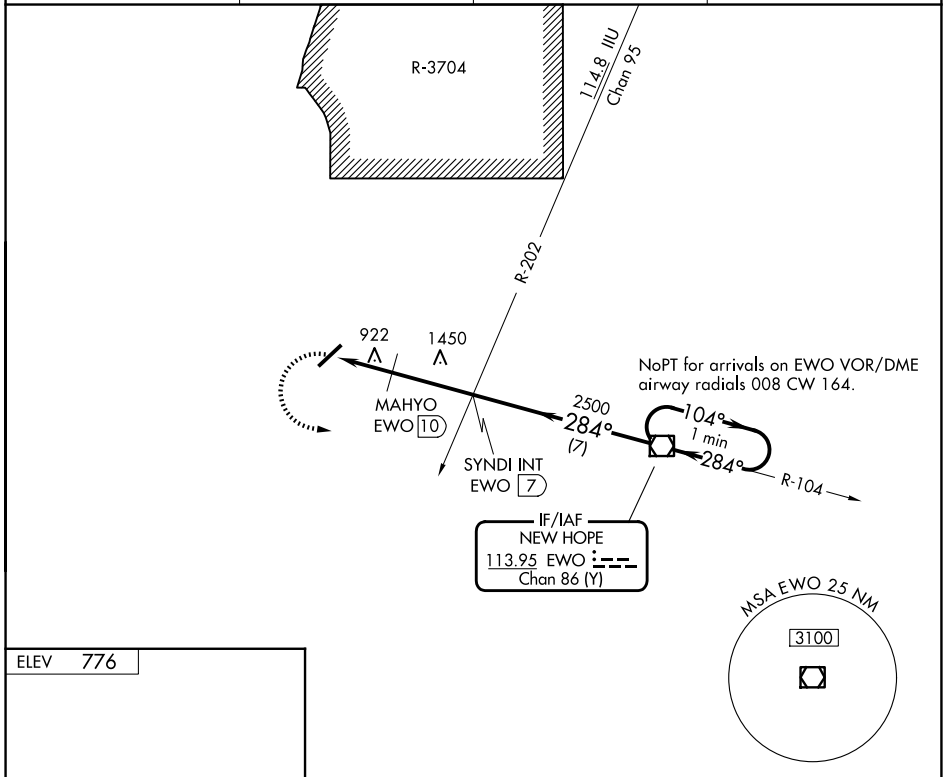
VOR/DME EWO <b>113.95</b> Chan <b>86</b> (Y)	APP CRS <b>284°</b>	Rwy Ldg TDZE Apt Elev	<b>N/A</b> <b>N/A</b> <b>776</b>
--	------------------------	-----------------------------	--

**VOR-A**  
ADDINGTON FLD (EKK)

**NA** When local altimeter setting not received, use Bardstown altimeter setting: increase all MDAs 80 feet and visibility Cat B and Cat C ¼ SM; MAHYO fix minimums: increase visibility Cat C ¼ SM.

**MISSED APPROACH:** Climbing left turn to 2500 direct to EWO VOR/DME and hold.

AWOS-3 <b>118.55</b>	LOUISVILLE APP CON <b>123.675 327.0</b>	CLNC DEL <b>119.45</b>	UNICOM <b>123.075</b> (CTAF) <b>0</b>
-------------------------	--	---------------------------	--



FAF to MAP 5.1 NM	MAHYO FIX MINIMUMS			
	A	B	C	D
CIRCLING	1700-1¼ 924 (1000-1¼)		1700-2¾ 924 (1000-2¾)	1760-3 984 (1000-3)
CIRCLING	1240-1 464 (500-1)	1260-1 484 (500-1)	1420-1¼ 644 (700-1¼)	1760-3 984 (1000-3)

SE-1, 16 APR 2026 to 14 MAY 2026

SE-1, 16 APR 2026 to 14 MAY 2026