

CALDWELL, TEXAS

AL-6743 (FAA)

23278

VORTAC CLL 113.3 Chan 80	APP CRS 243°	Rwy Idg TDZE Apt Elev	N/A N/A 391
--	------------------------	-----------------------------	--

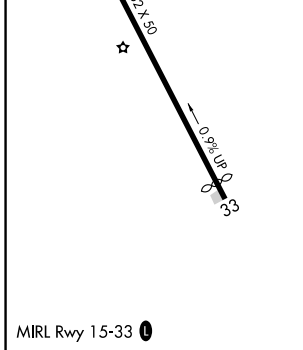
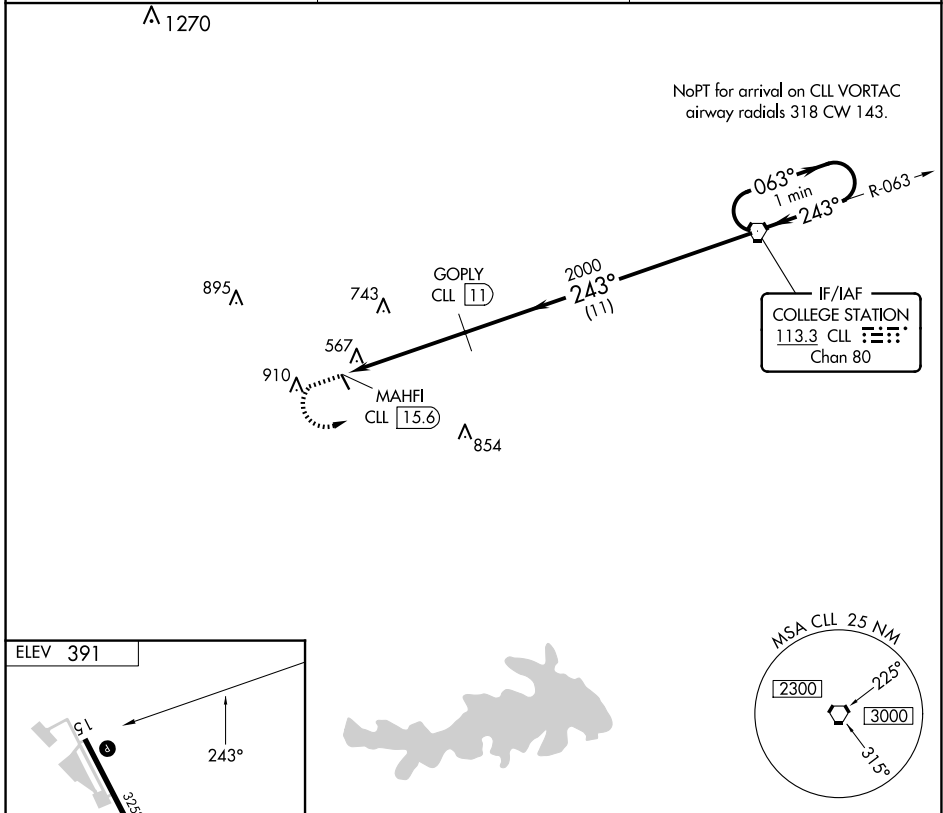
VOR/DME-A

CALDWELL MUNI (R/WV)

⚠ When local altimeter setting not received, use College Station altimeter setting and increase MDA 60 feet. Circling NA east of Rwy 15-33. Procedure NA at night.

MISSED APPROACH: Climb to 2000 then climbing left turn to 2100 direct CLL VORTAC and hold.

AWOS-3PT 118.35	HOUSTON APP CON 134.3 360.85	CTAF 122.9
---------------------------	--	----------------------



2000	2100	CLL	CLL VORTAC	One Minute Holding Pattern
↑	↶	⬡	⬡	⬡
MAHFI CLL 15.6		GOPLY CLL 11	2000	2100
4.6 NM		11 NM		063° → 2100
← 243°		← 243°		
CATEGORY	A	B	C	D
CIRCLING	1000-1 609 (700-1)	1220-1¼ 829 (900-1¼)	NA	

CALDWELL, TEXAS
Amdt 3A 30DEC21

30°31'N-96°42'W

CALDWELL MUNI (R/WV)
VOR/DME-A

SC-5, 16 APR 2026 to 14 MAY 2026

SC-5, 16 APR 2026 to 14 MAY 2026