

WAAS CH <b>70319</b> <b>W24A</b>	APP CRS <b>238°</b>	Rwy Idg <b>12000</b> TDZE <b>30</b> Apt Elev <b>30</b>
--	------------------------	--

# RNAV (GPS) Y RWY 24

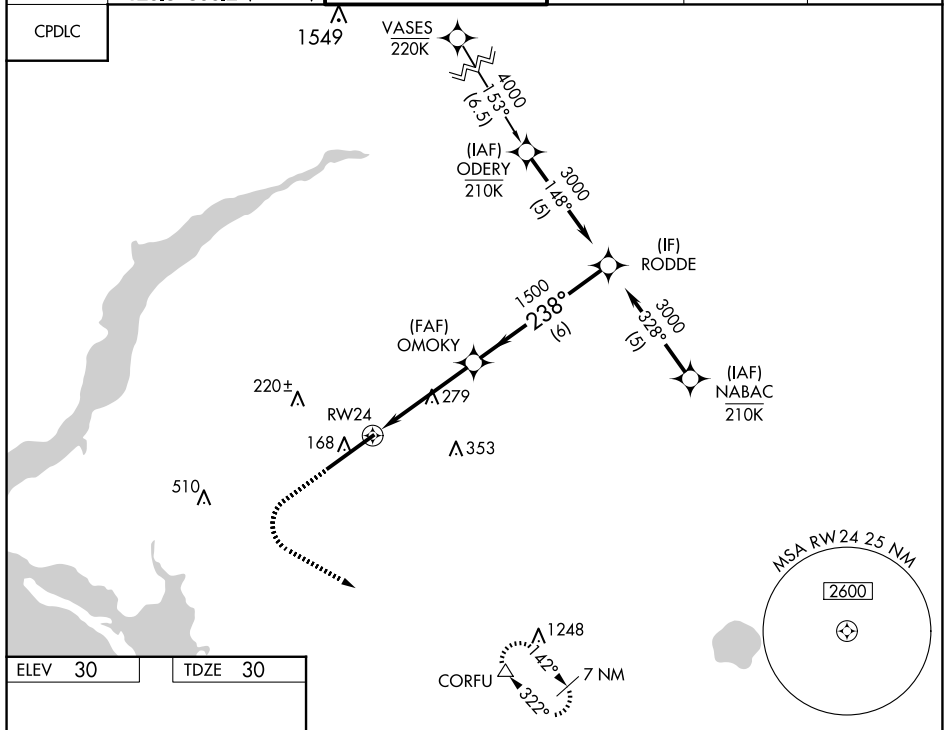
SOUTHWEST FLORIDA INTL (RSW)

RNP APCH - GPS.

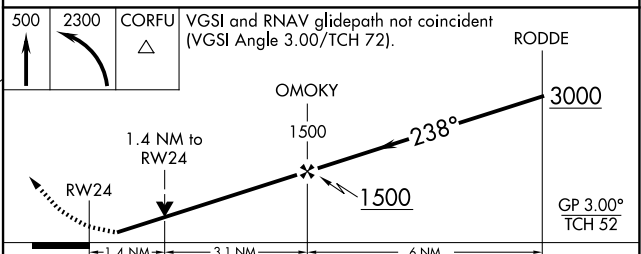
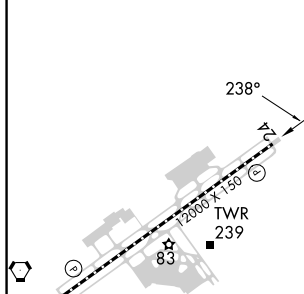
▼ For uncompensated Baro-VNAV systems, LNAV/VNAV NA below 4°C or above 54°C. Rwy 24 helicopter visibility reduction below ¾ SM NA.

MISSED APPROACH: Climb to 500 then climbing left turn to 2300 direct CORFU and hold, continue climb-in-hold to 2300.

D-ATIS <b>124.65</b>	FORT MYERS APP CON ★ <b>125.15 306.2</b> (RWY 6) <b>126.8 306.2</b> (RWY 24)	FORT MYERS TOWER ★ <b>128.75</b> (CTAF) <b>0 257.8</b>	GND CON <b>121.9 257.8</b>	CLNC DEL <b>132.075</b>	UNICOM <b>122.95</b>
-------------------------	--	---	-------------------------------	----------------------------	-------------------------



ELEV 30	TDZE 30
---------	---------



CATEGORY	A	B	C	D
LPV DA		280-¾	250 (300-¾)	
LNAV/VNAV DA		292-7/8	262 (300-7/8)	
LNAV MDA	540-1	510 (600-1)	540-1¾	510 (600-1¾)
CIRCLING	560-1	530 (600-1)	580-1½ 550 (600-1½)	660-2 630 (700-2)

REIL Rwy 24  
TDZ/CL Rwy 6  
HIRL Rwy 6-24

SE-3, 16 APR 2026 to 14 MAY 2026

SE-3, 16 APR 2026 to 14 MAY 2026