

SCUBY EIGHT DEPARTURE

FORT MYERS, FLORIDA

**TOP ALTITUDE:
3000**

RADAR required.

- ★ FORT MYERS DEP CON
119.75 (Rwy 24)
124.125 (Rwy 6)
- 371.85
- MIAMI CENTER
134.75 322.5
- D-ATIS
124.65
- CLNC DEL
132.075
- GND CON
121.9 257.8
- ★ FORT MYERS TOWER
128.75 (CTAF) 257.8

ORLANDO
112.2 ORL :---
Chan 59

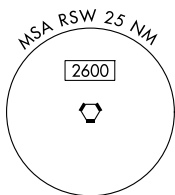
ST. PETERSBURG
116.4 PIE :---
Chan 111

LAKELAND
116.0 LAL :---
Chan 107

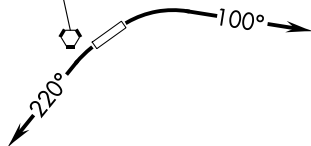
SARASOTA
117.0 SRQ :---
Chan 117

LEE COUNTY
114.15 RSW :---
Chan 88(Y)

KEY WEST
113.5 EYW :---
Chan 82



TAKEOFF MINIMUMS
Rwy 6, 24: Standard.



NOTE: Chart not to scale.



DEPARTURE ROUTE DESCRIPTION

TAKEOFF RUNWAY 6: Climbing right turn heading 100° or as assigned for vectors to join filed route, thence. . . .

TAKEOFF RUNWAY 24: Climbing left turn heading 220° or as assigned for vectors to join filed route, thence. . . .

. . . .all aircraft maintain 3000 or assigned altitude. Expect further clearance to filed altitude within 10 minutes after departure.

SCUBY EIGHT DEPARTURE