

VORTAC RSW <b>114.15</b> Chan <b>88(Y)</b>	APP CRS <b>244°</b>	Rwy Idg <b>12000</b> TDZE <b>30</b> Apt Elev <b>30</b>
--	------------------------	--

# VOR or TACAN Rwy 24

SOUTHWEST FLORIDA INTL (RSW)

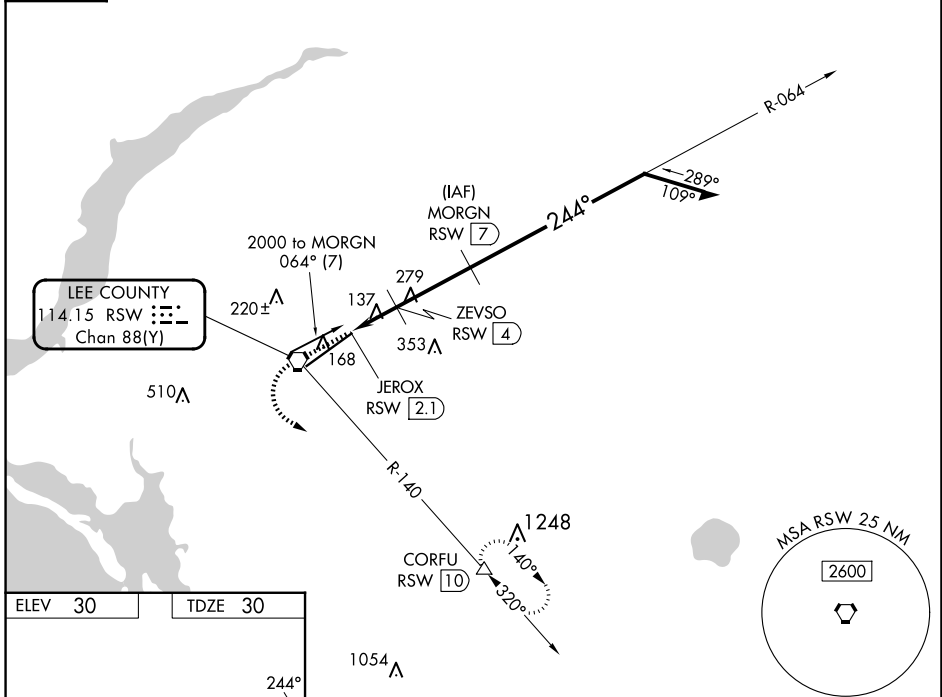
DME required.

▼ Rwy 24 helicopter visibility reduction below  $\frac{3}{4}$  SM NA.

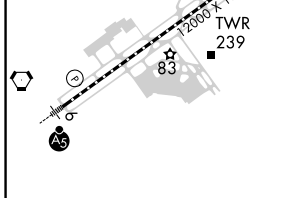
MISSED APPROACH: Climb to 1000 then climbing left turn to 2300 on RSW VORTAC R-140 to CORFU/RSW 10 DME and hold.

D-ATIS <b>124.65</b>	FORT MYERS APP CON ★ <b>125.15 306.2</b> (RWY 6) <b>126.8 306.2</b> (RWY 24)	FORT MYERS TOWER ★ <b>128.75</b> (CTAF) <b>0 257.8</b>	GND CON <b>121.9 257.8</b>	CLNC DEL <b>132.075</b>	UNICOM <b>122.95</b>
-------------------------	--	---	-------------------------------	----------------------------	-------------------------

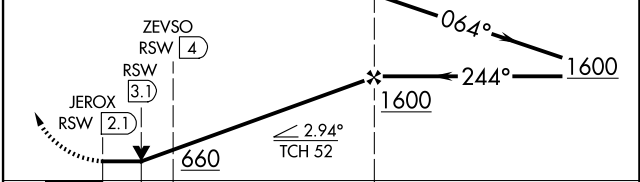
CPDLC



ELEV 30	TDZE 30
---------	---------



1000	2300	RSW R-140	CORFU	VGSIs and descent angles not coincident (VGSIs Angle 3.00/TCH 72). Remain within 10 NM
------	------	-----------	-------	---



CATEGORY	A	B	C	D
S-24	400-1 370 (400-1)			
CIRCLING	560-1	530 (600-1)	580-1½ 550 (600-1½)	660-2 630 (700-2)

REIL Rwy 24  
TDZ/CL Rwy 6  
HIRL Rwy 6-24

SE-3, 16 APR 2026 to 14 MAY 2026

SE-3, 16 APR 2026 to 14 MAY 2026