

WAAS CH <b>97707</b> <b>W12A</b>	APP CRS <b>119°</b>	Rwy Idg TDZE Apt Elev	<b>5500</b> <b>2431</b> <b>2432</b>
----------------------------------------	------------------------	-----------------------------	-------------------------------------------

# RNAV (GPS) RWY 12

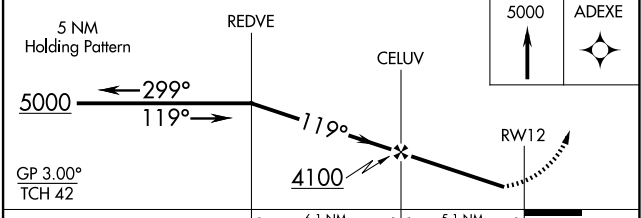
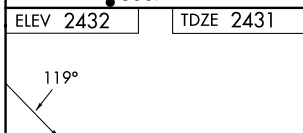
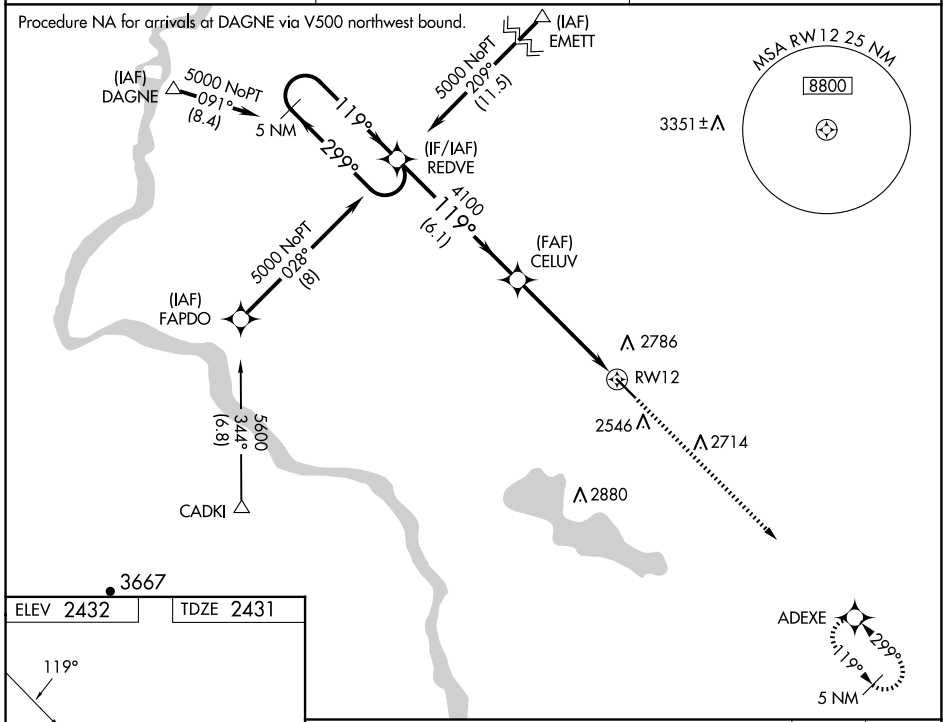
CALDWELL EXEC (EUL)

RNP APCH-GPS.

▼ Procedure NA at night. Rwy 12 helicopter visibility reduction below 1 SM NA.  
 ▲ Baro-VNAV NA when using Boise altimeter setting. For uncompensated Baro-VNAV systems, LNAV/VNAV NA below -19°C or above 44°C. When local altimeter setting not received, use Boise altimeter setting and increase all DA/MDA 120 feet and all visibilities ½ mile.

MISSED APPROACH: Climb to 5000 direct ADEXE and hold.

AWOS-3PT <b>135.075</b>	BIG SKY APP CON <b>119.6 269.4</b>	UNICOM <b>123.0 (CTAF) 0</b>
----------------------------	---------------------------------------	---------------------------------



CATEGORY	A	B	C	D
LPV DA		2700-1	269 (300-1)	
LNAV/VNAV DA		2994-2	563 (600-2)	
LNAV MDA	2840-1	409 (500-1)	2840-1¼	409 (500-1¼)

NW-1, 16 APR 2026 to 14 MAY 2026

NW-1, 16 APR 2026 to 14 MAY 2026