

WAAS CH 62941 W27A	APP CRS 272°	Rwy Ldg TDZE Apt Elev	5400 213 225
--	------------------------	-----------------------------	---

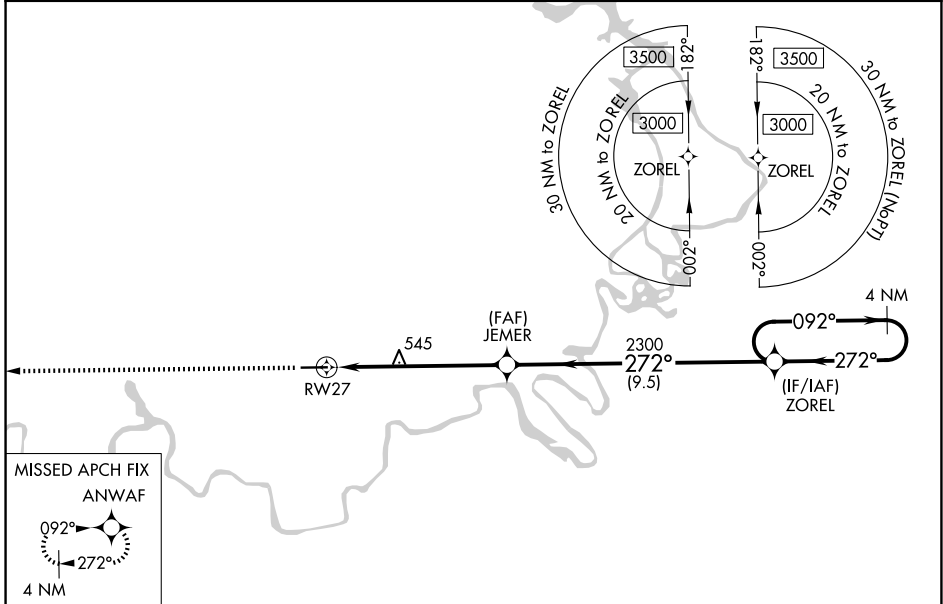
RNAV (GPS) RWY 27

PRATTVILLE/GROUBY FLD (1A9)

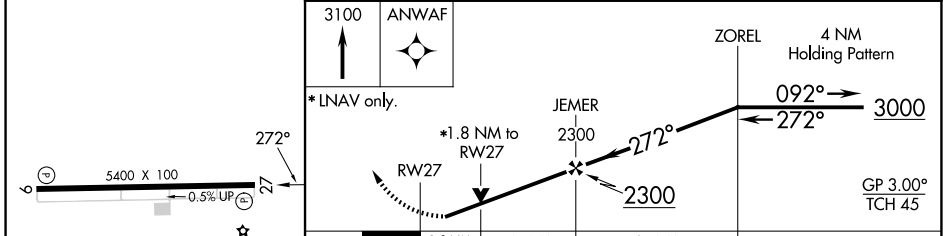
▼ Circling to Rwy 9 NA at night. For uncompensated Baro-VNAV systems, LNAV/VNAV NA below -15°C (5°F) or above 54°C (130°F). Rwy 27 helicopter visibility reduction below ¾ SM NA. DME/DME RNP-0.3 NA.

MISSED APPROACH: Climb to 3100 direct ANWAF and hold.

AWOS-3P 118.025	MONTGOMERY APP CON ★ 121.2 269.05	GCO 121.725	UNICOM 122.8 (CTAF)
---------------------------	---	-----------------------	-------------------------------



ELEV 225	TDZE 213
----------	----------



CATEGORY	A	B	C	D
LPV DA		496-7/8	283 (300-7/8)	
LNAV/VNAV DA		659-13/8	446 (500-13/8)	
LNAV MDA	820-1	607 (600-1)	820-1 3/4	607 (600-1 3/4)
CIRCLING	1000-1	775 (800-1)	1080-2 1/2 855 (900-2 1/2)	1140-3 915 (1000-3)

MIRL Rwy 9-27
REIL Rwy 9 and 27

SE-4, 16 APR 2026 to 14 MAY 2026

SE-4, 16 APR 2026 to 14 MAY 2026