

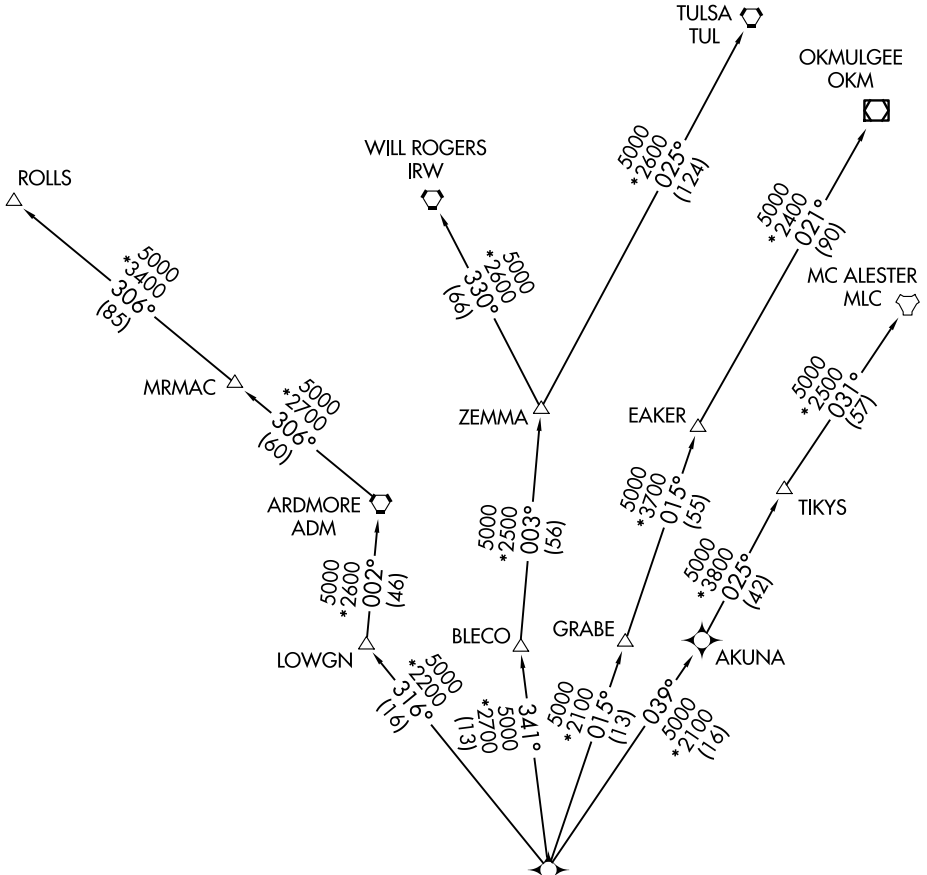
# NANDR THREE DEPARTURE (RNAV)

LONE STAR DEP CON  
125.2 343.65

RNAV 1 - DME/DME/IRU or GPS.

RADAR required.

**TOP ALTITUDE:  
ASSIGNED BY ATC**

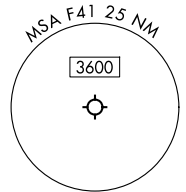


SC-2, 16 APR 2026 to 14 MAY 2026

SC-2, 16 APR 2026 to 14 MAY 2026

**TAKEOFF MINIMUMS**  
Rwys 16, 34: Standard.

- NOTE: EAKER Transition: For TUL terminal arrivals only.
- NOTE: TULSA Transition: For all aircraft overflying TUL VORTAC.
- NOTE: Aircraft arriving to the Oklahoma City terminal area, file and expect the ZEMMA enroute transition.



NOTE: Chart not to scale.

(CONTINUED ON FOLLOWING PAGE)

# NANDR THREE DEPARTURE (RNAV)