

| | | |
|--|------------------------|---|
| WAAS CH 65933 W02A | APP CRS 018° | Rwy Ldg 3554 TDZE 876 Apt Elev 878 |
|--|------------------------|---|

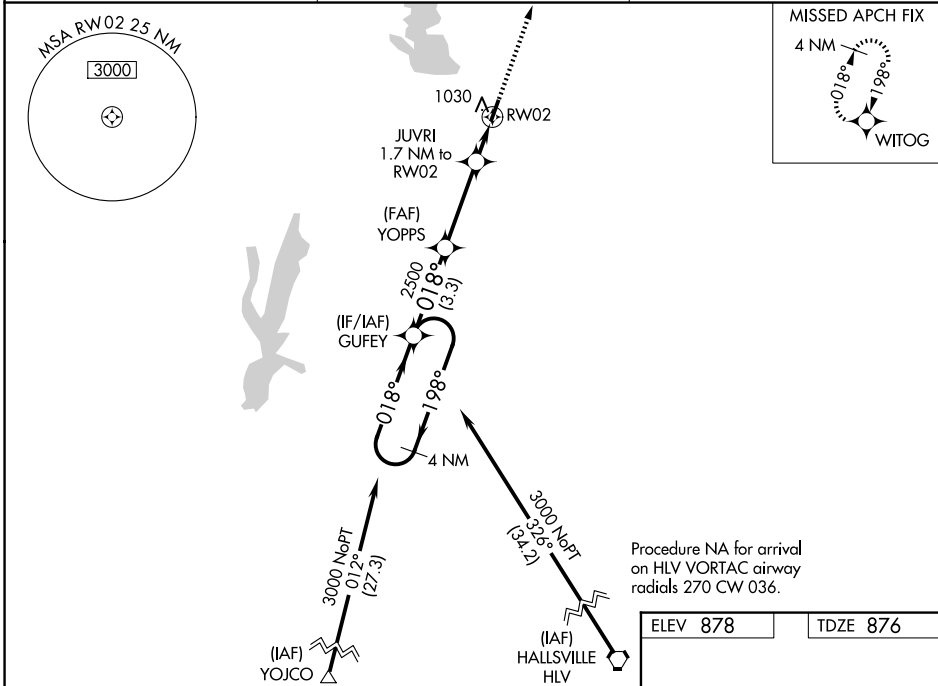
RNAV (GPS) RWY 2

MACON-FOWER MEML (K89)

NA DME/DME RNP-0.3 NA. Use Moberly altimeter setting; when not received use Columbia altimeter setting and increase all DA 91 feet and all MDA 100 feet and increase LPV all Cats and LNAV/VNAV all Cats visibility ¼ mile. Helicopter visibility reduction below ¾ SM NA. Night Landing: Rwy 20 NA. Baro-VNAV NA.

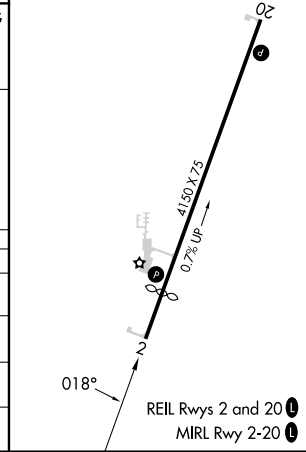
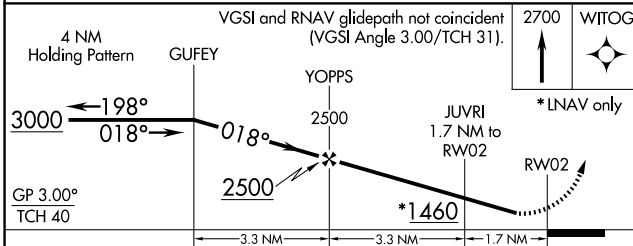
MISSED APPROACH: Climb to 2700 direct WITOG and hold.

| | | |
|--------------------------------|--|---------------------------------|
| MBY AWOS-3PT 120.025 | KANSAS CITY CENTER 132.6 370.9 | UNICOM 122.8 (CTAF) 0 |
|--------------------------------|--|---------------------------------|



Procedure NA for arrival on HLV VORTAC airway radials 270 CW 036.

| | |
|----------|----------|
| ELEV 878 | TDZE 876 |
|----------|----------|



| CATEGORY | A | B | C | D |
|--------------|-----------------------|-----------------------|---|----|
| LPV DA | 1165-1 | 289 (300-1) | | NA |
| LNAV/VNAV DA | 1309-1½ | 433 (500-1½) | | NA |
| LNAV MDA | 1320-1 | 444 (500-1) | | NA |
| CIRCLING | 1400-1 522 (600-1) | 1560-1 682 (700-1) | | NA |

NC-3, 16 APR 2026 to 14 MAY 2026

NC-3, 16 APR 2026 to 14 MAY 2026