


WAAS CH <b>77905</b> <b>W23A</b>	APP CRS <b>234°</b>	Rwy Ldg TDZE Apt Elev	<b>7300</b> <b>7143</b> <b>7143</b>
--	------------------------	-----------------------------	---

# RNAV (GPS) RWY 23

EVANSTON-UINTA COUNTY BURNS FLD (E V W)

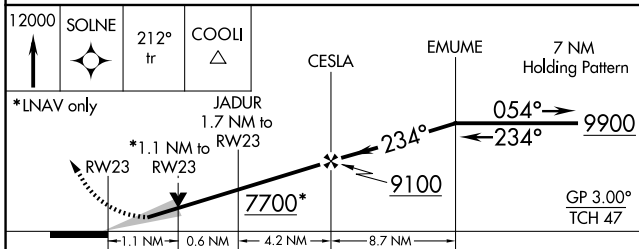
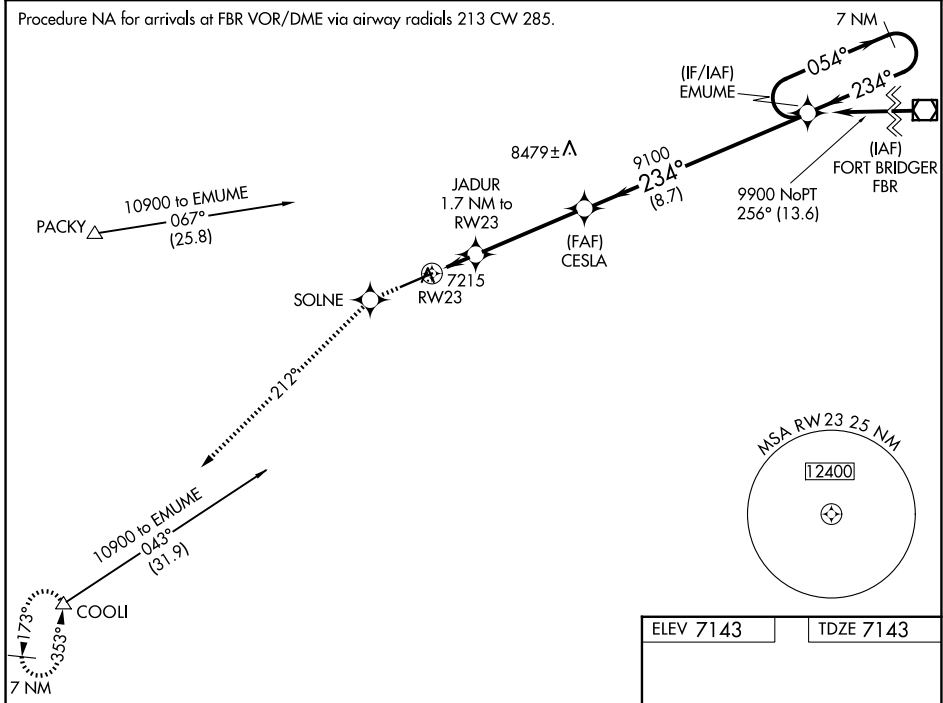
RNP APCH - GPS.

**⚠** For inoperative MALS/R, increase LPV all Cats visibility to 1, LNAV/VNAV Cat D to 1 and LNAV Cat D to 1¼. When local altimeter setting not received, procedure NA. For uncompensated Baro-VNAV systems, LNAV/VNAV NA below -29°C or above 34°C.

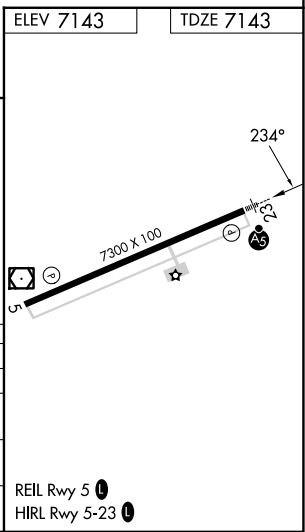
MALS/R 

MISSED APPROACH: Climb to 12000 direct SOLNE and via 212° track to COOLI and hold, continue climb-in-hold to 12000.

ASOS <b>120.0</b>	SALT LAKE CENTER <b>127.7 354.125</b>	GCO <b>121.72</b>	UNICOM <b>123.0</b> (CTAF) 
----------------------	--	----------------------	---




ELEV 7143	TDZE 7143
-----------	-----------




RWY 23 7300 X 100

TA  $\star$  45

TB  $\star$  45

REIL Rwy 5 

HIRL Rwy 5-23 

CATEGORY	A	B	C	D
LPV DA	7393-1/2 250 (300-1/2)			
LNAV/VNAV DA	7443-1/2	300 (300-1/2)	7443-3/4 300 (300-3/4)	
LNAV MDA	7520-1/2	377 (400-1/2)	7520-1 377 (400-1)	
CIRCLING	7680-1 537 (600-1)	7760-1 617 (700-1)	7800-1 3/4 657 (700-1 3/4)	8000-2 3/4 857 (900-2 3/4)

NW-1, 16 APR 2026 to 14 MAY 2026

NW-1, 16 APR 2026 to 14 MAY 2026