

GARLAND SIX DEPARTURE

(CONTINUED ON FOLLOWING PAGE)

LONE STAR DEP CON
 135.975 379.9
ATIS
 120.025
GND CON
 119.475
SPINKS TOWER*
 124.625 (CTAF)

TOP ALTITUDE: ASSIGNED BY ATC

TAKEOFF MINIMUMS
 Rwy 18L: 36R: NA-Environmental.
 Rwy 18R, 36L: Standard.

NOTE: SOLDO Transition: ATC assigned.

RADAR and DME required.

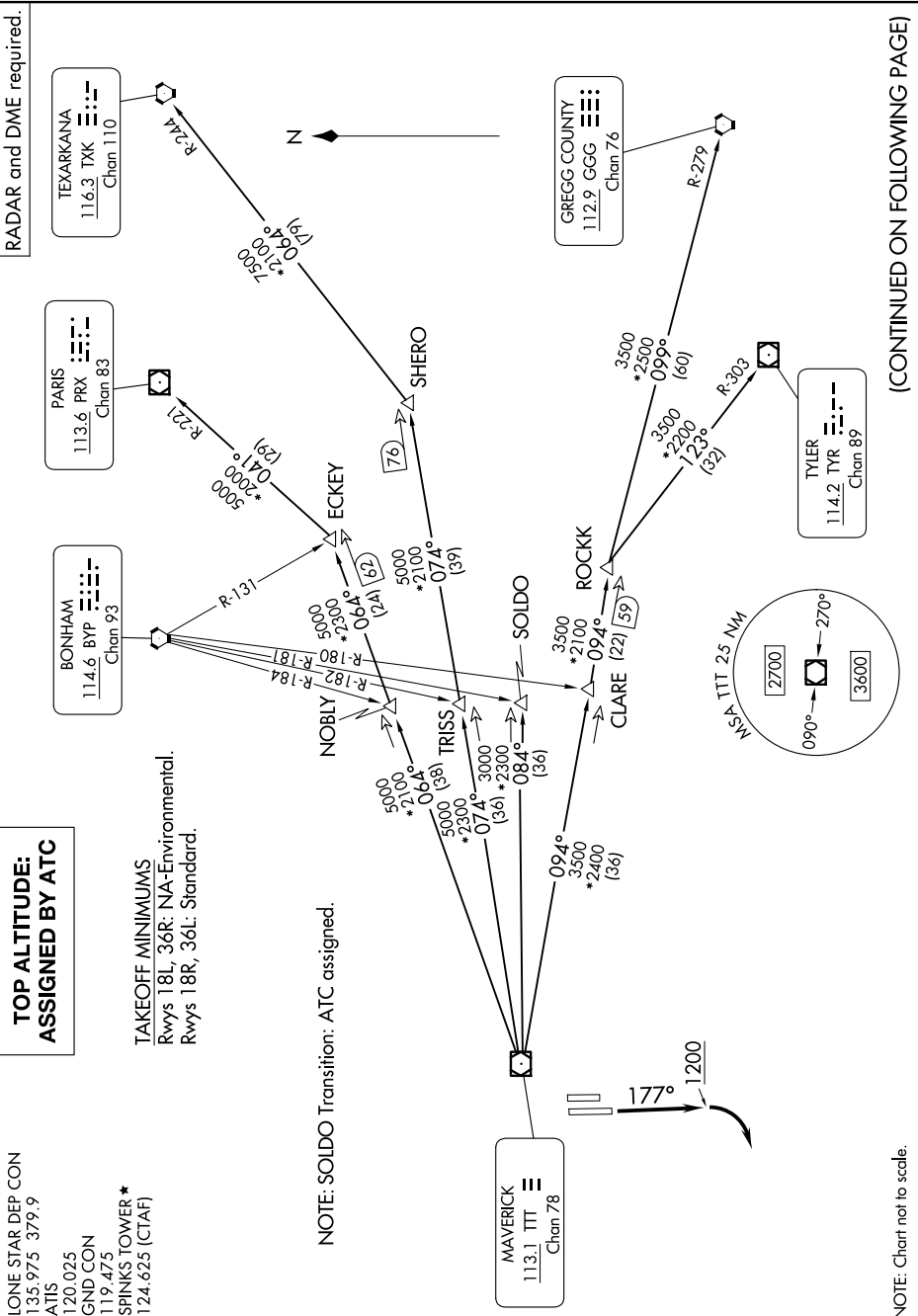
TEXARKANA
 116.3 TKX
 Chan 110

PARIS
 113.6 PRX
 Chan 83

BONHAM
 114.6 BYP
 Chan 93

GREGG COUNTY
 112.9 GGG
 Chan 76

TYLER
 114.2 TYR
 Chan 89



NOTE: Chart not to scale.

SC-2, 16 APR 2026 to 14 MAY 2026

SC-2, 16 APR 2026 to 14 MAY 2026