

KINGDOM FIVE DEPARTURE

FORT WORTH, TEXAS

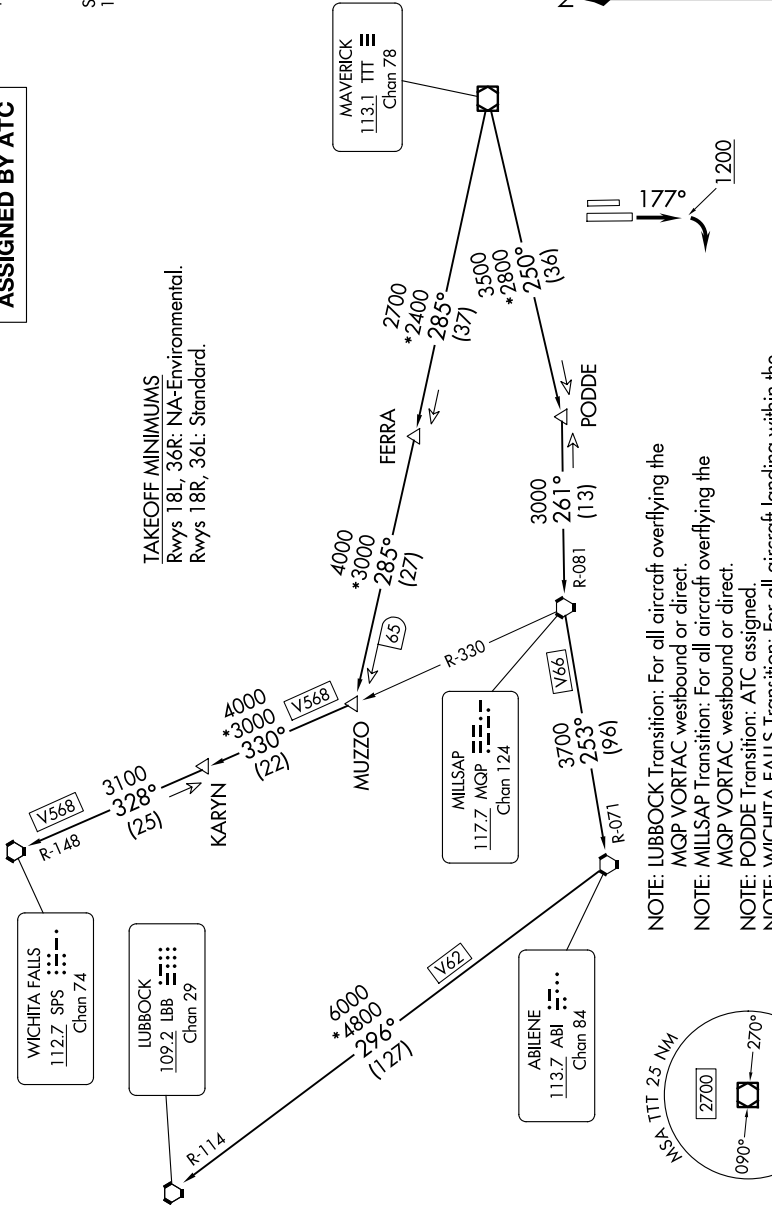
SC-2, 16 APR 2026 to 14 MAY 2026

RADAR and DME required.

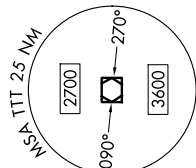
**TOP ALTITUDE:
ASSIGNED BY ATC**

LONE STAR DEP CON
135.975 379.9
ATIS
120.025
GND CON
119.475
SPINKS TOWER*
124.625 (CTAF)

TAKEOFF MINIMUMS
Rwys 18L, 36R: NA-Environmental.
Rwys 18R, 36L: Standard.



- NOTE: LUBBOCK Transition: For all aircraft overlying the MQP VORTAC westbound or direct.
- NOTE: MILLSAP Transition: For all aircraft overlying the MQP VORTAC westbound or direct.
- NOTE: PODDE Transition: ATC assigned.
- NOTE: WICHITA FALLS Transition: For all aircraft landing within the Wichita Falls terminal area or overlying the SPS VORTAC.
- NOTE: For all aircraft requesting 17000 and below.



NOTE: Chart not to scale.

(CONTINUED ON FOLLOWING PAGE)

SC-2, 16 APR 2026 to 14 MAY 2026

KINGDOM FIVE DEPARTURE

FORT WORTH, TEXAS

FORT WORTH SPINKS (FWS)