

# GARLAND SIX DEPARTURE

SC-2, 16 APR 2026 to 14 MAY 2026

## TOP ALTITUDE: ASSIGNED BY ATC

LONE STAR DEP CON  
118.1 306.95  
ATIS  
126.925  
CINC DEL  
128.725  
GND CON  
132.65 306.2  
ALLIANCE TOWER  
135.15 257.9

RADAR and DME required.

TEXARKANA  
116.3 TKX  
Chan 110

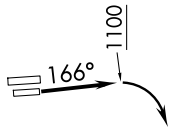
PARIS  
113.6 PRX  
Chan 83

BONHAM  
114.6 BYP  
Chan 93

GREGG COUNTY  
112.9 GGG  
Chan 76

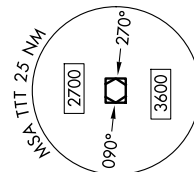
TYLER  
114.2 TYR  
Chan 89

NOTE: SOLDO Transition: ATC assigned.



MAVERICK  
113.1 TTT  
Chan 78

**TAKEOFF MINIMUMS**  
Rwys 34L/R: Standard.  
Rwy 16L: 300-2 1/4 or standard with minimum climb of 220' /NM to 1100, or alternatively, with standard takeoff minimums and a normal 200' /NM climb gradient; takeoff must occur no later than 1900' prior to DER.  
Rwy 16R: 300-2 1/4 or standard with minimum climb of 225' /NM to 1100, or alternatively, with standard takeoff minimums and a normal 200' /NM climb gradient; takeoff must occur no later than 2000' prior to DER.



NOTE: Chart not to scale.

(CONTINUED ON FOLLOWING PAGE)

SC-2, 16 APR 2026 to 14 MAY 2026

# GARLAND SIX DEPARTURE