

APP CRS	Rwy Ldg	2190
344°	TDZE	168
	Apt Elev	168

RNAV (GPS) RWY 36

FREEWAY (W00)

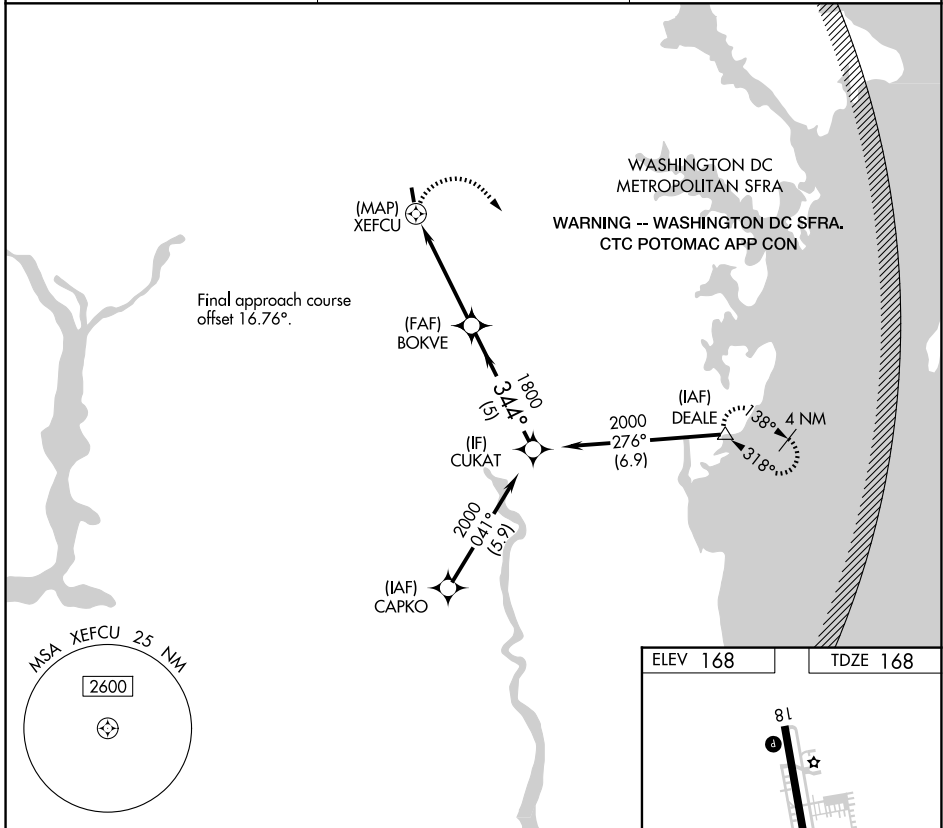
RNP APCH:

▼ Procedure NA at night. Rwy 36 helicopter visibility reduction below 1 SM
 ▲ NA Use Fort Meade (Odenton) altimeter setting; when not received, use College Park altimeter setting and increase all MDAs 20 feet.

MISSED APPROACH: Climbing right turn to 2000 direct DEALE and hold.

FME AWOS-3	POTOMAC APP CON
123.925	128.0 335.5

UNICOM
123.075 (CTAF) 0



NE-3, 16 APR 2026 to 14 MAY 2026

NE-3, 16 APR 2026 to 14 MAY 2026

