

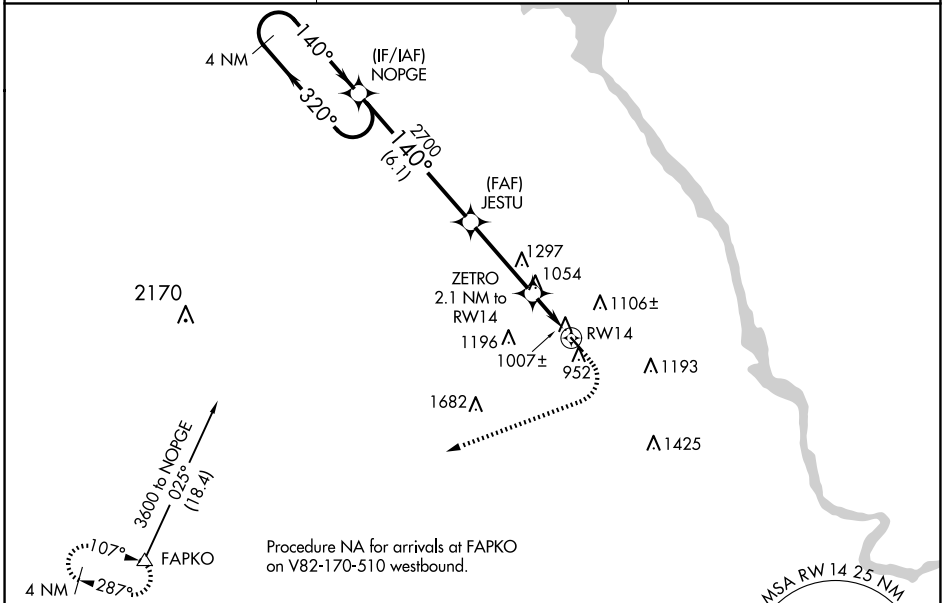
WAAS CH 78329 W14A	APP CRS 140°	Rwy Idg TDZE Apt Elev	3688 908 908
--	------------------------	-----------------------------	---

RNAV (GPS) RWY 14

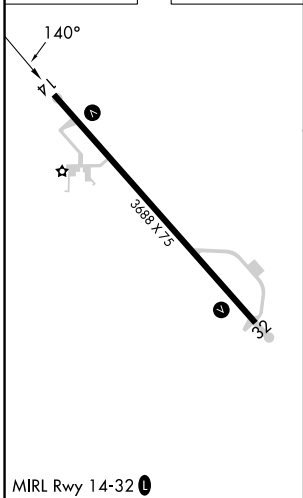
MAUSTON/NEW LISBON UNION (82C)

RNP APCH.	<p>Use Volk Field altimeter setting; when not received use Wisconsin Dells altimeter setting and increase all MDA 60 feet and all Cat C visibilities ¼ mile. Procedure NA at night. Helicopter visibility reduction below 1 SM NA.</p>	<p>MISSED APPROACH: Climb to 1500 then climbing right turn to 4000 direct FAPKO and hold.</p>
<p>▼ Use Volk Field altimeter setting; when not received use Wisconsin Dells altimeter setting and increase all MDA 60 feet and all Cat C visibilities ¼ mile. Procedure NA at night. Helicopter visibility reduction below 1 SM NA.</p> <p>▲ NA</p>		

AWOS-3 123.925	VOLK APP CON ★ 135.25 244.875	CTAF 122.9
--------------------------	---	----------------------



ELEV 908	TDZE 908
----------	----------



4 NM Holding Pattern	Visual Segment - Obstacles.	1500	4000	FAPKO
NOPGE	JESTU	↑	↷	△
3600 ← 320°	2700	ZETRO 2.1 NM to RW14	RW14	
140° →	1620			
	6.1 NM	3.4 NM	2.1 NM	
CATEGORY	A	B	C	D
LP MDA	1280-1 372 (400-1)			NA
LNAV MDA	1340-1 432 (500-1)		1340-1¼ 432 (500-1¼)	NA

EC-3, 16 APR 2026 to 14 MAY 2026

EC-3, 16 APR 2026 to 14 MAY 2026