

WAAS CH 53518 W17A	APP CRS 174°	Rwy Idg TDZE Apt Elev	3898 822 825
---------------------------------	------------------------	-----------------------------	---

RNAV (GPS) RWY 17

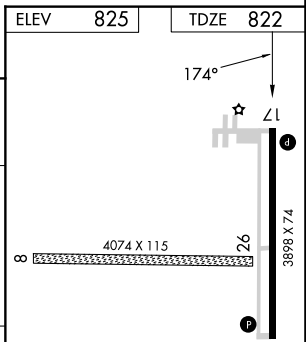
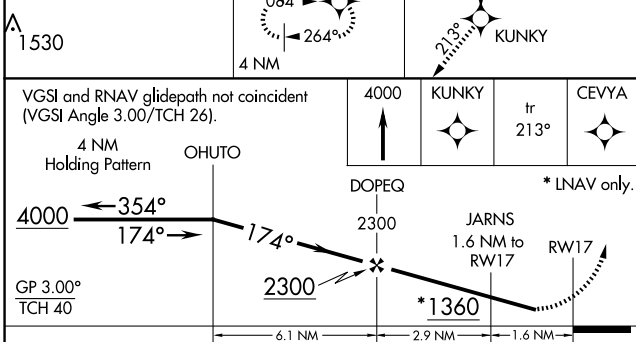
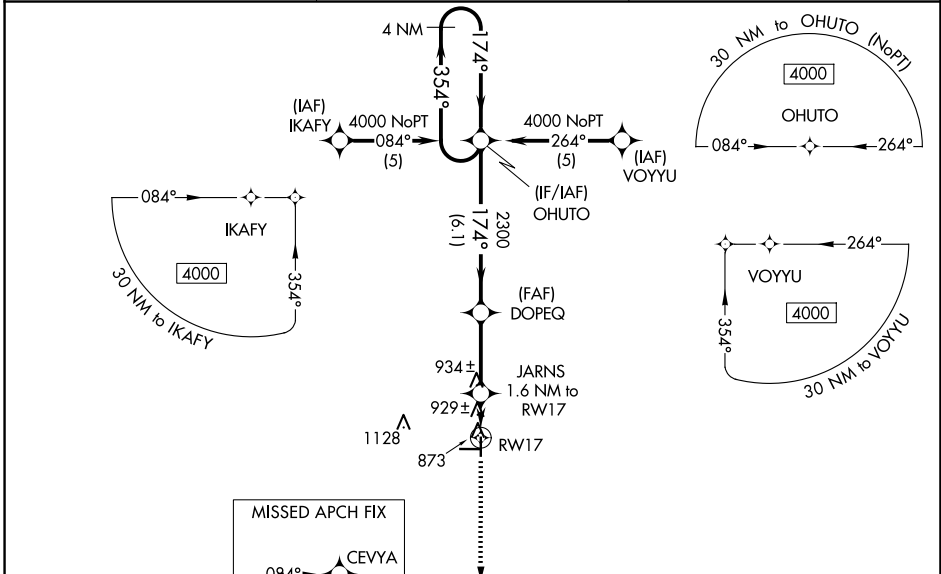
HUTSON FLD (GAF)

RNP APCH - GPS.

NA For uncompensated Baro-VNAV systems, LNAV/VNAV NA below -1.6°C or above 54°C. Rwy 17 helicopter visibility reduction below 3/4 SM NA. When local altimeter setting not received, use Grand Forks Intl altimeter setting: increase LPV DA to 1141 feet and all visibilities 1/4 SM; increase LNAV/VNAV DA to 1297 feet and all visibilities 1/4 SM; increase all MDA's 80 feet and visibility LNAV and circling Cat C 1/4 SM. Baro-VNAV NA when using Grand Forks Intl altimeter setting. Circling NA to Rwys 8 and 26.

MISSED APPROACH: Climb to 4000 direct KUNKY and on track 213° to CEVYA and hold, continue climb-in-hold to 4000.

AWOS-3 118.625	GRAND FORKS APP CON * 118.1 318.1	UNICOM 122.8 (CTAF) 0
--------------------------	---	--



CATEGORY	A	B	C	D
LPV DA	1072-1	250 (300-1)		NA
LNAV/VNAV DA	1228-1½	406 (500-1½)		NA
LNAV MDA	1200-1	378 (400-1)		NA
CIRCLING	1340-1	515 (600-1)	1440-1¾ 615 (700-1¾)	NA

MIRL Rwy 17-35 **0**

NC-1, 16 APR 2026 to 14 MAY 2026

NC-1, 16 APR 2026 to 14 MAY 2026