

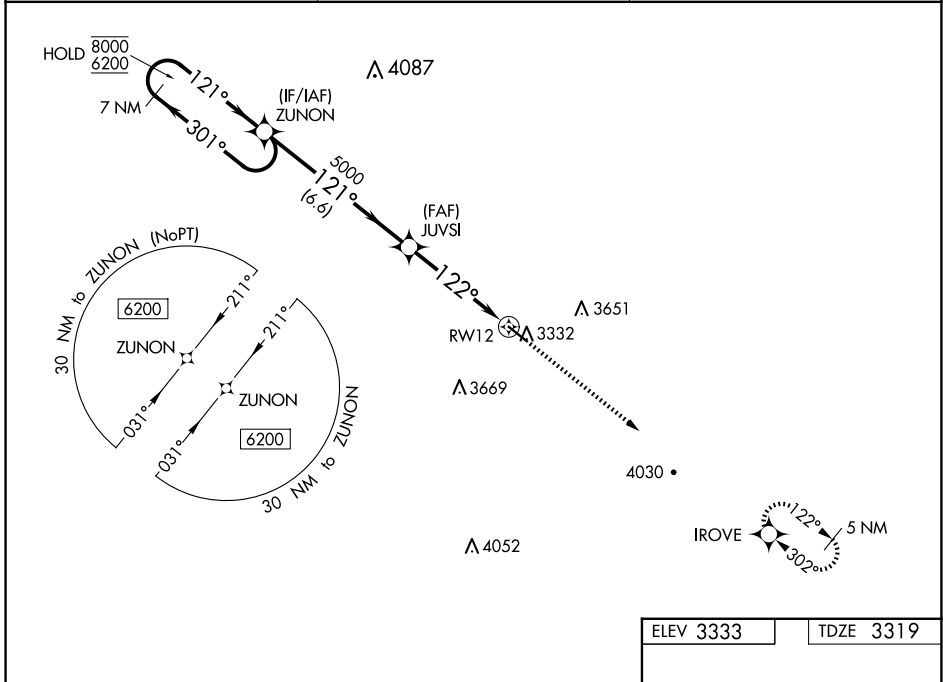
WAAS CH <b>97542</b> <b>W12A</b>	APP CRS <b>122°</b>	Rwy Idg TDZE Apt Elev	<b>5000</b> <b>3319</b> <b>3333</b>
--	------------------------	-----------------------------	---

# RNAV (GPS) RWY 12

PINE RIDGE (IEN)

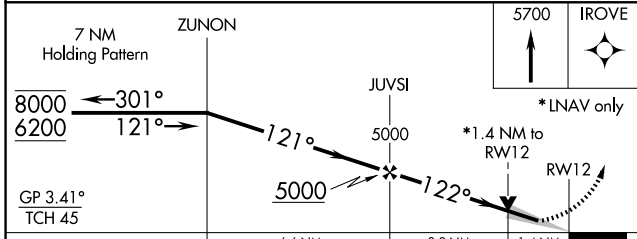
RNP APCH.	MISSED APPROACH: Climb to 5700 direct IROVE and hold.
For uncompensated Baro-VNAV systems, LNAV/VNAV NA below -28°C or above 54°C.	

ASOS <b>126.775</b>	DENVER CENTER <b>127.95 338.2</b>	CTAF <b>122.9</b>
------------------------	--------------------------------------	----------------------

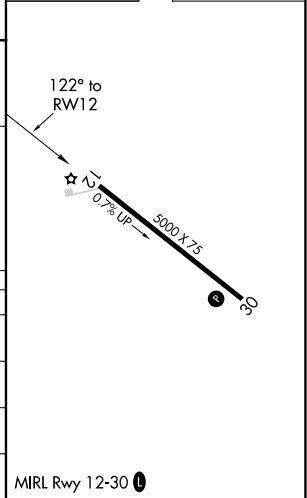


NC-1, 16 APR 2026 to 14 MAY 2026

NC-1, 16 APR 2026 to 14 MAY 2026



ELEV 3333	TDZE 3319
-----------	-----------



CATEGORY	A	B	C	D
LPV DA	3589-1 270 (300-1)			NA
LNAV/VNAV DA	3772-1 <sup>3</sup> / <sub>8</sub> 453 (500-1 <sup>3</sup> / <sub>8</sub> )			NA
LNAV MDA	3840-1	521 (600-1)	3840-1 <sup>1</sup> / <sub>2</sub> 521 (600-1 <sup>1</sup> / <sub>2</sub> )	NA
CIRCLING	3900-1 567 (600-1)	4080-1 747 (800-1)	4200-2 <sup>1</sup> / <sub>2</sub> 867 (900-2 <sup>1</sup> / <sub>2</sub> )	NA

MIRL Rwy 12-30