

LOC/DME I-GAO 109.1 Chan 28	APP CRS 359°	Rwy Ldg 6500 TDZE -2 Apt Elev 0
---	------------------------	--

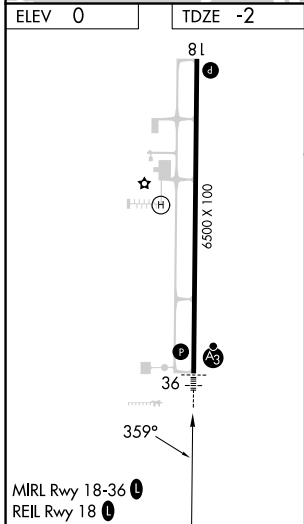
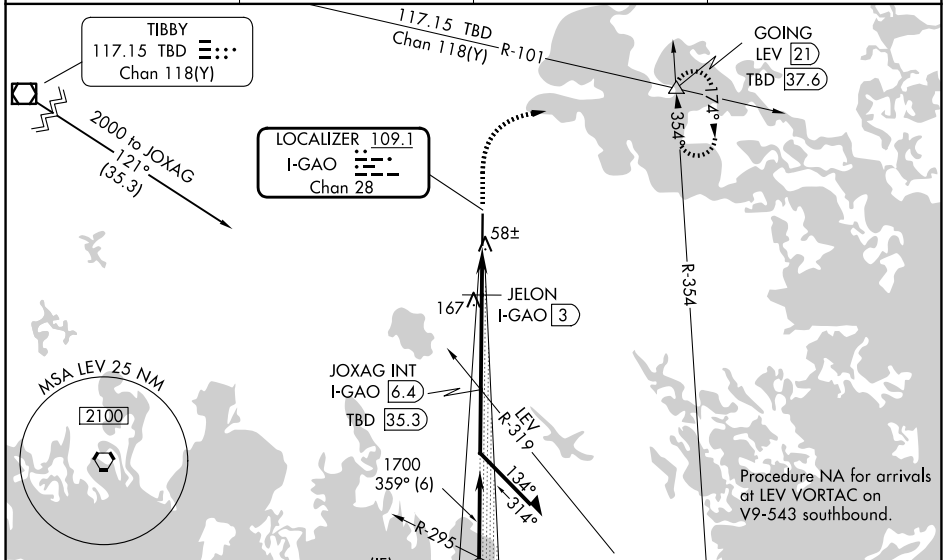
ILS or LOC RWY 36

SOUTH LAFOURCHE LEONARD MILLER JR (GAO)

DME required.

MISSED APPROACH: Climb to 1200, then climbing right turn to 2000 on heading 050° and TBD VOR/DME R-101 to GOING INT/LEV 21 DME and hold.

AWOS-3PT 118.175	NEW ORLEANS APP CON 120.85 256.9	CLNC DEL 120.85	UNICOM 123.0 (CTAF) 0
----------------------------	--	---------------------------	---------------------------------



1200	2000	TBD R-101	GOING	JOXAG INT I-GAO 6.4	Remain within 10 NM
↑	hdg 050°		△		
*LOC only.	*I-GAO 2.1	JELON I-GAO 3	1700	179°	2000
I-GAO 1.2			620*	359°	1700
					GS 3.00° TCH 51
	0.9 NM	0.9 NM	3.4 NM		
CATEGORY	A	B	C	D	
S-ILS 36		198-½	200 (200-½)		
S-LOC 36		320-½	322 (400-½)		
CIRCLING	440-1 440 (500-1)	560-1 560 (600-1)	640-1¾ 640 (700-1¾)	640-2 640 (700-2)	

SC-4, 16 APR 2026 to 14 MAY 2026

SC-4, 16 APR 2026 to 14 MAY 2026