

WAAS CH 61308 W18A	APP CRS 179°	Rwy Ldg 6500 TDZE 0 Apt Elev 0
--	------------------------	---

RNAV (GPS) RWY 18

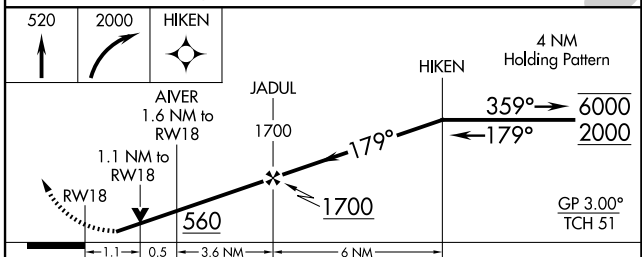
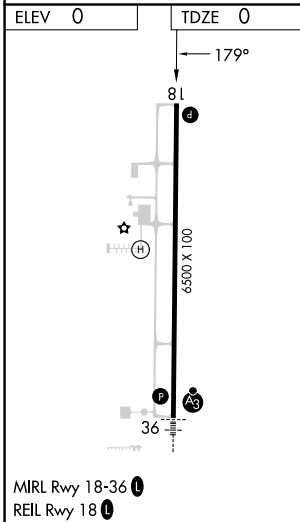
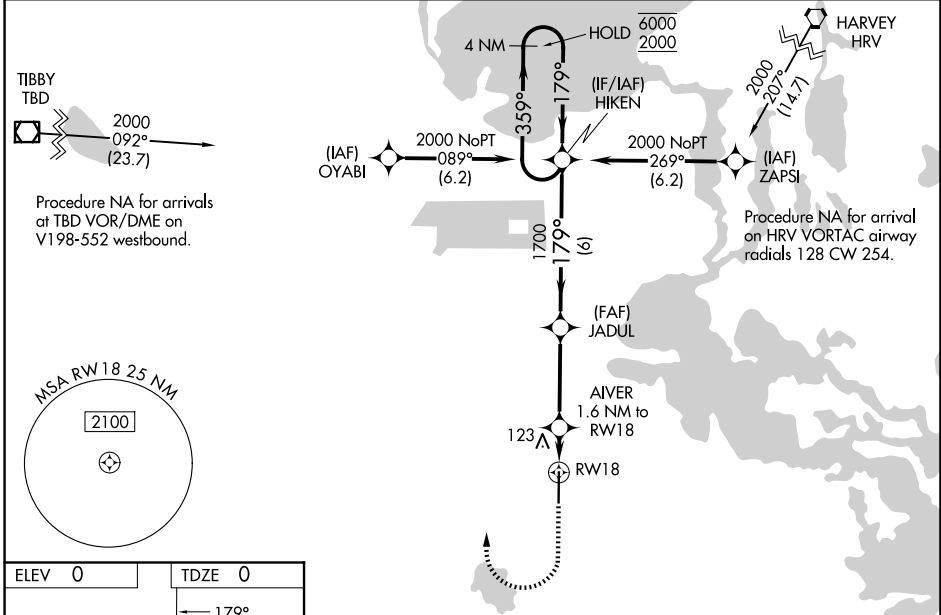
SOUTH LAFOURCHE LEONARD MILLER JR (G.A.O)

RNP APCH - GPS.

⚠ Rwy 18 helicopter visibility reduction below 3/4 SM NA. For uncompensated Baro-VNAV systems, LNAV/VNAV NA below -15°C or above 54°C. When local altimeter setting not received, use Louis Armstrong New Orleans Intl altimeter setting: increase LPV DA to 396 feet and all visibilities 3/4 SM; increase LNAV/VNAV DA to 361 feet, visibility Cats A and B 1/2 SM and Cats C and D 3/4 SM; increase all MDAs 80 feet and LNAV visibility Cats C and D 3/4 SM and Circling visibility Cats C and D 1/2 SM. Baro-VNAV and VDP NA when using Louis Armstrong New Orleans Intl altimeter setting.

MISSED APPROACH: Climb to 520 then climbing right turn to 2000 direct HIKEN and hold.

AWOS-3PT 118.175	NEW ORLEANS APP CON 120.85 256.9	CINC DEL 120.85	UNICOM 123.0 (CTAF) 0
----------------------------	--	---------------------------	---------------------------------



CATEGORY	A	B	C	D
LPV DA	319-1 319 (400-1)			
LNAV/VNAV DA	284-7/8	284 (300-7/8)	284-1	284 (300-1)
LNAV MDA	380-1	380 (400-1)	380-1 3/4 380 (400-1 3/4)	380-2 380 (400-2)
CIRCLING	440-1 440 (500-1)	560-1 560 (600-1)	640-1 3/4 640 (700-1 3/4)	640-2 640 (700-2)

SC-4, 16 APR 2026 to 14 MAY 2026

SC-4, 16 APR 2026 to 14 MAY 2026