

WAAS CH <b>69608</b> <b>W36A</b>	APP CRS <b>359°</b>	Rwy Ldg <b>6500</b> TDZE <b>-2</b> Apt Elev <b>0</b>
--	------------------------	--

# RNAV (GPS) RWY 36

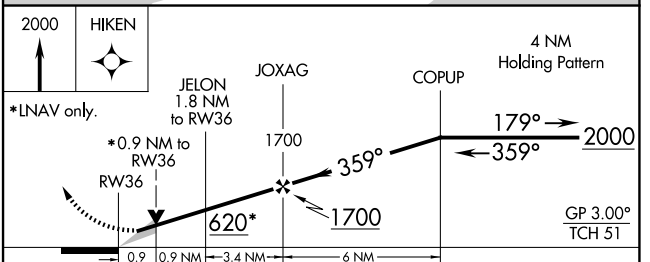
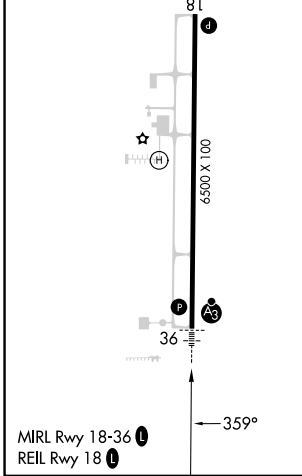
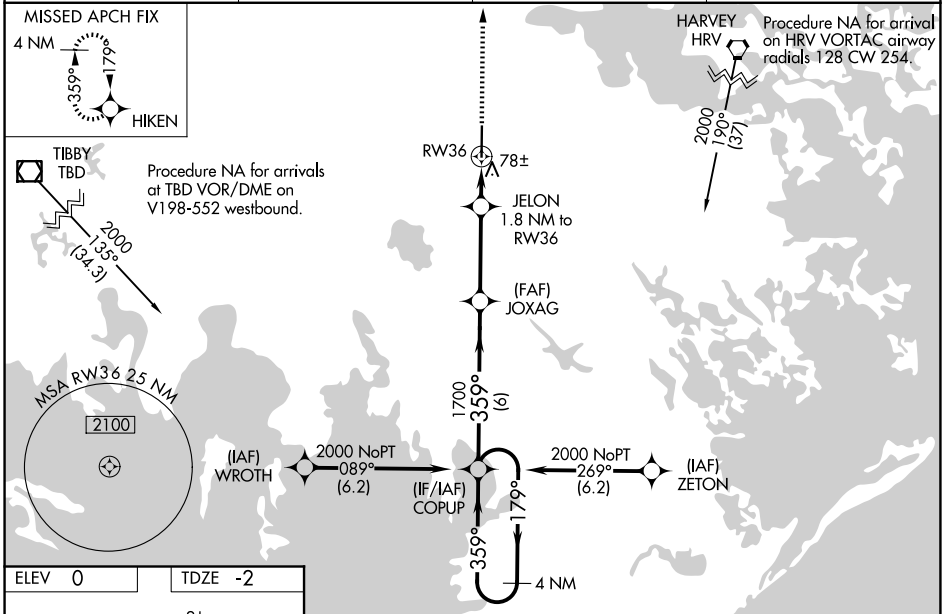
SOUTH LAFOURCHE LEONARD MILLER JR (G.A.O)

RNP APCH.

⚠ For uncompensated Baro-VNAV systems, LNAV/VNAV NA below -15°C or above 54°C. For inop ALS, increase LNAV/VNAV all Cats visibility to ¾ SM and LNAV Cat C and D visibility to 1 SM. When local altimeter setting not received, use Louis Armstrong New Orleans Intl altimeter setting and increase LPV DA to 275 feet, LNAV/VNAV DA to 325 feet and all MDA 80 feet and increase LNAV/VNAV all Cats visibility ½ SM, LNAV Cat C and D visibility ½ SM and Circling Cat C and D visibility ½ SM. For inop ALS, when using Louis Armstrong New Orleans Intl altimeter setting, increase LPV and LNAV/VNAV all Cats visibility ½ SM. Baro-VNAV and VDP NA when using Louis Armstrong New Orleans Intl altimeter setting.

SSALR MISSED APPROACH: Climb to 2000 direct HIKEN and hold.

AWOS-3PT <b>118.175</b>	NEW ORLEANS APP CON <b>120.85 256.9</b>	CLNC DEL <b>120.85</b>	UNICOM <b>123.0 (CTAF) 0</b>
----------------------------	--	---------------------------	---------------------------------



CATEGORY	A	B	C	D
LPV DA		198-½	200 (200-½)	
LNAV/VNAV DA		248-½	250 (300-½)	
LNAV MDA	340-½	342 (400-½)	340-⅝	342 (400-⅝)
CIRCLING	440-1 440 (500-1)	560-1 560 (600-1)	640-1¾ 640 (700-1¾)	640-2 640 (700-2)

SC-4, 16 APR 2026 to 14 MAY 2026

SC-4, 16 APR 2026 to 14 MAY 2026