

WAAS CH 99541 W07A	APP CRS 067°	Rwy Ldg TDZE Apt Elev	6409 5249 5278
--	------------------------	-----------------------------	---

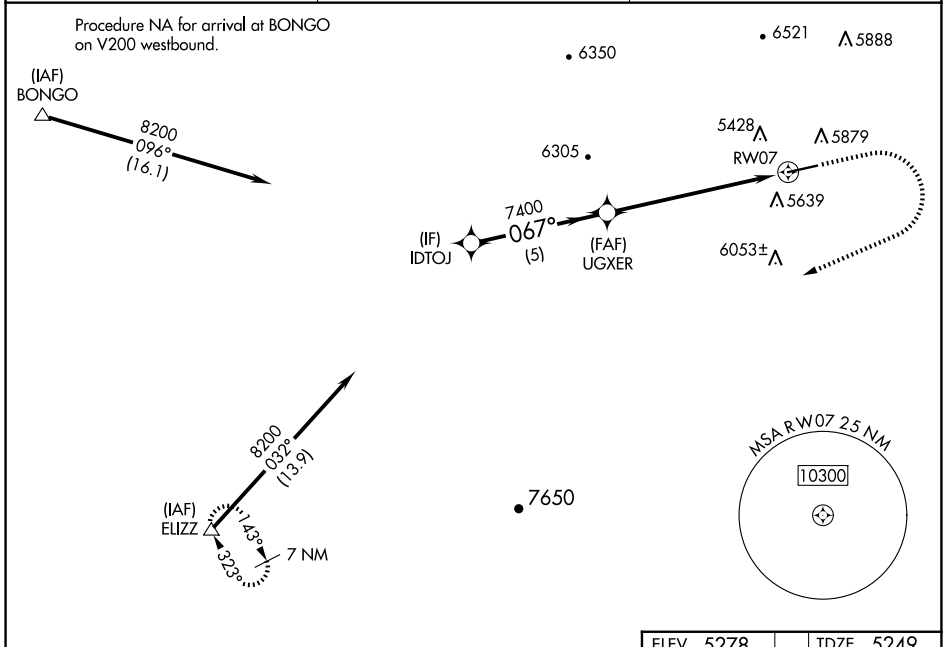
RNAV (GPS) RWY 7

RANGELY (4VØ)

⚠ For uncompensated Baro-VNAV systems, LNAV/VNAV NA below -28°C (-18°F) or above 54°C (130°F). Circling Rwy 25 NA at night. DME/DME RNP-0.3 NA.

MISSED APPROACH: Climb to 5700 then climbing right turn to 10800 direct ELIZZ and hold.
Missed approach requires a minimum climb of 425 feet per NM to 8200 feet.

AWOS-3PT 119.025	DENVER CENTER 134.5 327.8	UNICOM 122.8 (CTAF) 📻
----------------------------	-------------------------------------	--



SW-1, 16 APR 2026 to 14 MAY 2026

SW-1, 16 APR 2026 to 14 MAY 2026

		ELEV 5278	TDZE 5249
IDTOJ		5700	ELIZZ
UGXER		10800	△
RWY 07		* LNAV only.	
GP 3.00° TCH 40		* 5.9 NM to RWY 07	
5 NM		0.8 NM	
5.9 NM			
CATEGORY	A	B	C
LPV DA#	5599-1 350 (400-1)		NA
LPV DA	6013-2½ 764 (800-2½)		NA
LNAV/ VNAV DA	6041-2½ 792 (800-2½)		NA
LNAV MDA	7180-1¼ 1931 (2000-1¼)	7180-1½ 1931 (2000-1½)	7180-3 1931 (2000-3)
Ⓢ CIRCLING	7180-1¼ 1902 (2000-1¼)	7180-1½ 1902 (2000-1½)	7180-3 1902 (2000-3)

MIRL Rwy 7-25 **📻**
REIL Rwy 7 and 25 **📻**