

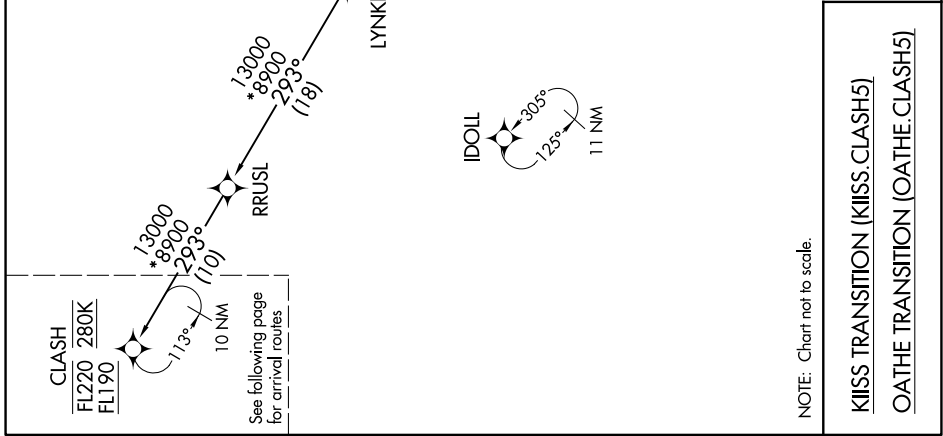
# CLASH FIVE ARRIVAL (RNAV) Transition Routes

(CONTINUED ON FOLLOWING PAGE)

DENVER APP CON  
126.55 269.525  
D-ATIS ARR  
125.6 379.9  
DENVER TOWER  
128.75 273.55 (Rwy 7-25)  
132.35 239.275 (Rwys 8-26, 17L-35R)  
124.3 322.45 (Rwy 17R-35L)  
135.3 351.95 (Rwys 16L-34R, 16R-34L)



RNAV 1 - DME/DME/IRU or GPS.  
RADAR required.



SW-1, 16 APR 2026 to 14 MAY 2026

SW-1, 16 APR 2026 to 14 MAY 2026

# CLASH FIVE ARRIVAL (RNAV) Transition Routes