

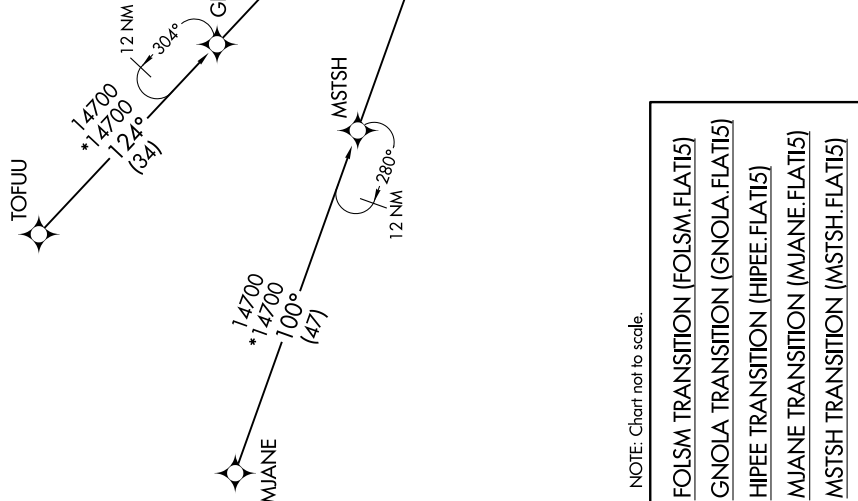
# FLATI FIVE ARRIVAL (RNAV) Transition Routes

RNAV 1 - DME/DME/IRU or GPS.  
RADAR required.

DENVER APP CON  
119.3 307.3  
D-ATIS ARR  
125.6 379.9  
DENVER TOWER  
128.75 273.55 (Rwy 7-25)  
132.35 239.275 (Rwys 8-26, 17L-35R)  
124.3 322.45 (Rwy 17R-35L)  
135.3 351.95 (Rwys 16L-34R, 16R-34L)

- NOTE: Jet aircraft only.
- NOTE: FOLSM, GNOLA, HIPEE, and MSTSH Transitions, ATC assigned only. Denver Center will issue "descend via" clearance and landing direction.
- NOTE: Expect runway assignment on initial contact with Denver TRACON.
- NOTE: Landing North select Rwy 35R Transition.
- NOTE: Landing South select Rwy 16L Transition.
- NOTE: Landing East select Rwy 7 Transition.
- NOTE: Landing West select Rwy 26 Transition.

See following page for Arrival Routes



NOTE: Chart not to scale.

- FOLSM TRANSITION (FOLSM.FLATI5)
- GNOLA TRANSITION (GNOLA.FLATI5)
- HIPEE TRANSITION (HIPEE.FLATI5)
- MUJANE TRANSITION (MUJANE.FLATI5)
- MSTSH TRANSITION (MSTSH.FLATI5)
- TOFUU TRANSITION (TOFUU.FLATI5)

(CONTINUED ON FOLLOWING PAGE)