

LOC/DME I-BXP 110.15 Chan 38(Y)	APP CRS 173°	Rwy Ldg 12000 TDZE 5339 Apt Elev 5434
---	------------------------	--

ILS or LOC RWY 17L

DENVER INTL (DEN)

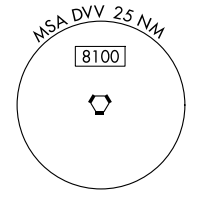
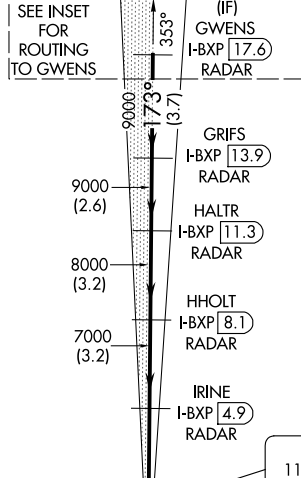
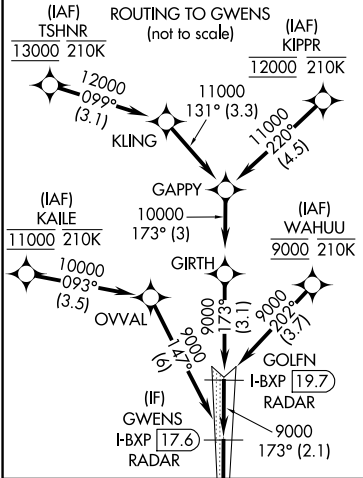
RNP APCH - GPS. From KAILE, KIPPR, TSHNR or WAHUU.
DME or RADAR required.



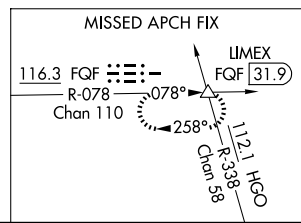
MISSED APPROACH: Climb to 5900 then climbing left turn to 10000 on heading 121° and FQG VORTAC R-078 to LIMEX INT/FQG 31.9 DME and hold.

Simultaneous approach authorized. For inop ALS, increase S-LOC Cat C and D visibility to RVR 4500.
*RVR 1800 authorized with the use of FD or AP or HUD to DA.

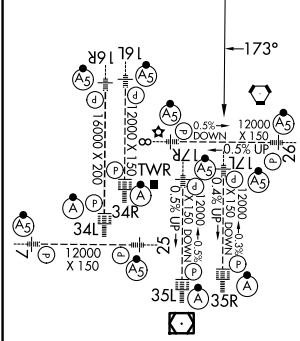
D-ATIS 125.6 379.9	DENVER APP CON 119.3 307.3(N) 120.35 379.3(S)	DENVER TOWER 132.35 239.275	GND CON 121.35 379.175(W) 121.85 377.1(E)
------------------------------	---	---------------------------------------	---



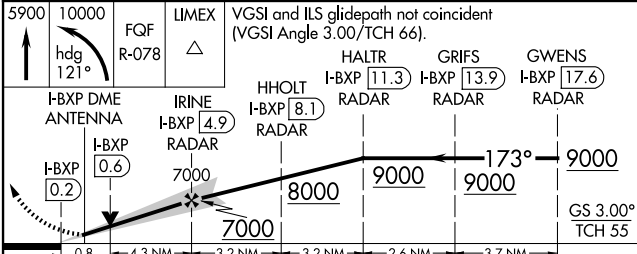
MILE HIGH
114.7 DVV
Chan 94



ELEV 5434	D	TDZE 5339
-----------	----------	-----------



LOCALIZER **110.15**
I-BXP
Chan 38(Y)



HIRL all Rwys
TDZL/RCLS Rwys 7, 16L, 16R, 17R, 26, 34L, 34R, 35L, 35R

FAF to MAP 5.1 NM

Knots	60	90	120	150	180
Min:Sec	5:06	3:24	2:33	2:02	1:42

CATEGORY	A	B	C	D
S-ILS 17L*		5539/24	200 (200-½)	
S-LOC 17L		5640/24	301 (300-½)	

SW-1, 16 APR 2026 to 14 MAY 2026

SW-1, 16 APR 2026 to 14 MAY 2026