

LOC/DME I-ERP <b>111.55</b> Chan <b>52(Y)</b>	APP CRS <b>263°</b>	Rwy Ldg TDZE Apt Elev	<b>12000</b> <b>5355</b> <b>5434</b>
---	------------------------	-----------------------------	--

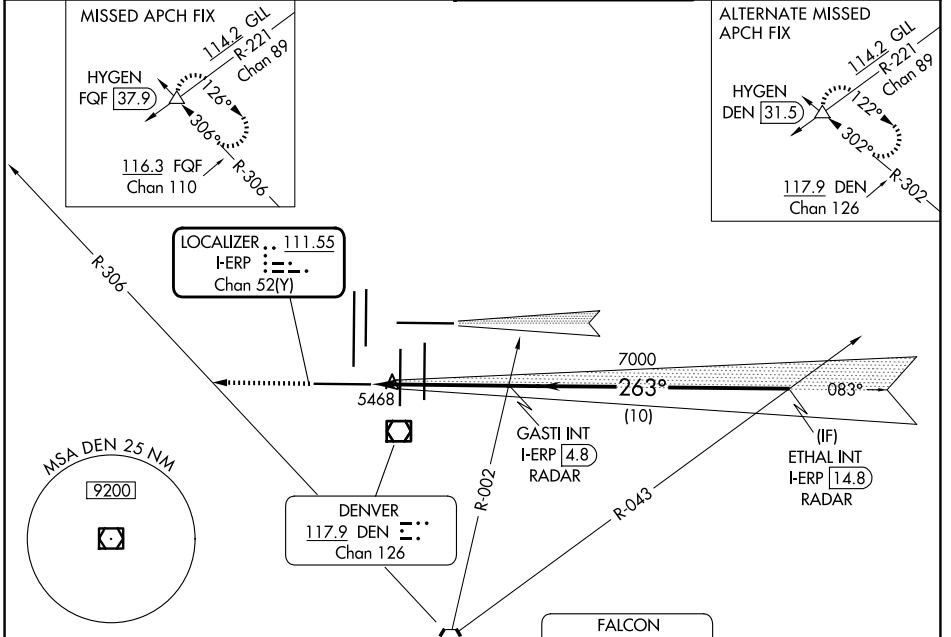
# ILS or LOC RWY 25

DENVER INTL (DEN)

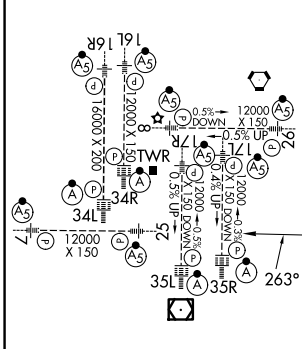
**Simultaneous approach authorized with Rwy 26. For inoperative MALSR, increase S-LOC 25 Cat C and D visibility to RVR 5500. \*\*RVR 1800 authorized with use of FD or AP or HUD to DA.**

**MALSR** MISSED APPROACH: Climb to 10000 on heading 263° and on FQF VORTAC R-306 to HYGEN INT/FQF 37.9 DME and hold.

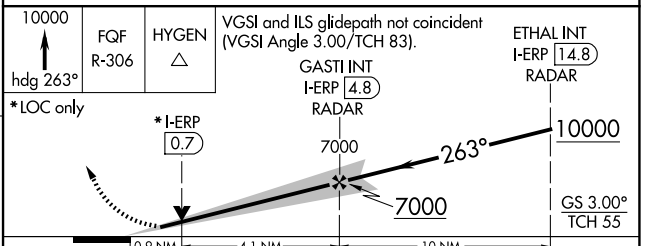
D-ATIS <b>125.6 379.9</b>	DENVER APP CON <b>119.3 307.3 (N)</b> <b>120.35 379.3 (S)</b>	DENVER TOWER <b>128.75 273.55</b>	GND CON <b>121.35 379.175 (W)</b> <b>121.85 377.1 (E)</b>
------------------------------	---	--------------------------------------	---



ELEV 5434	<b>D</b>	TDZE 5355
-----------	----------	-----------



## RADAR REQUIRED



CATEGORY	A	B	C	D
S-ILS 25 **	5555/24 200 (200-½)			
S-LOC 25	5720/24	365 (300-½)	5720/35	365 (300-⅝)

SW-1, 16 APR 2026 to 14 MAY 2026

SW-1, 16 APR 2026 to 14 MAY 2026