

(N11XX.N11XX4) 25163

AL-9077 (FAA)

DENVER INTL (DEN)
DENVER, COLORADO

N11XX FOUR ARRIVAL (RNAV) Arrival Routes

RNAV 1 - DME/DME/IRU or GPS.

RADAR required.

DENVER APP CON

126.55 269.525

D-ATIS ARR

125.6 379.9

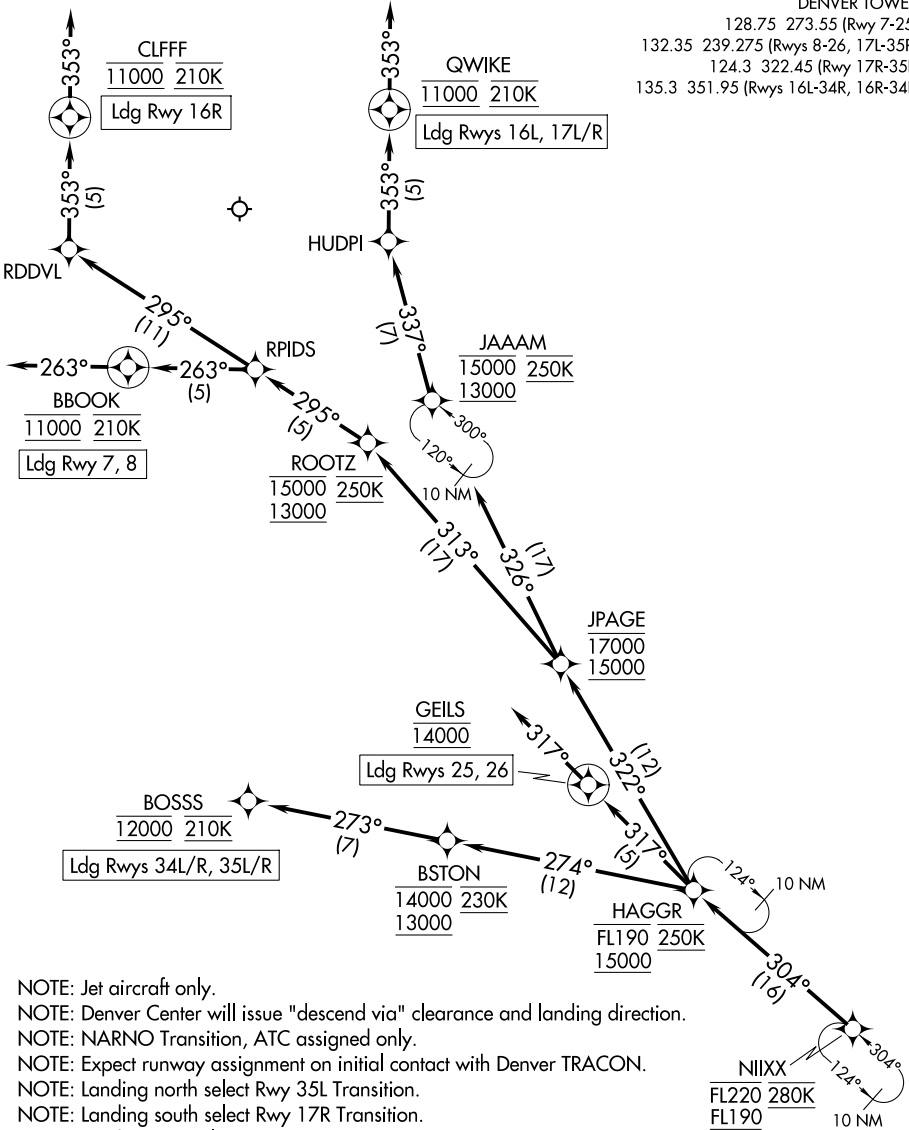
DENVER TOWER

128.75 273.55 (Rwys 7-25)

132.35 239.275 (Rwys 8-26, 17L-35R)

124.3 322.45 (Rwy 17R-35L)

135.3 351.95 (Rwys 16L-34R, 16R-34L)



SW-1, 16 APR 2026 to 14 MAY 2026

SW-1, 16 APR 2026 to 14 MAY 2026

- NOTE: Jet aircraft only.
- NOTE: Denver Center will issue "descend via" clearance and landing direction.
- NOTE: NARNO Transition, ATC assigned only.
- NOTE: Expect runway assignment on initial contact with Denver TRACON.
- NOTE: Landing north select Rwy 35L Transition.
- NOTE: Landing south select Rwy 17R Transition.
- NOTE: Landing east select Rwy 7 Transition.
- NOTE: Landing west select Rwy 26 Transition.

(CONTINUED ON FOLLOWING PAGE)

NOTE: Chart not to scale.

N11XX FOUR ARRIVAL (RNAV) Arrival Routes

DENVER, COLORADO
DENVER INTL (DEN)

(N11XX.N11XX4) 12JUN25