

ZIMMR FOUR DEPARTURE (RNAV)

AL-9077 (FAA)

DENVER INTL (DEN)
DENVER, COLORADO

SW-1, 16 APR 2026 to 14 MAY 2026

TOP ALTITUDE:
FL230

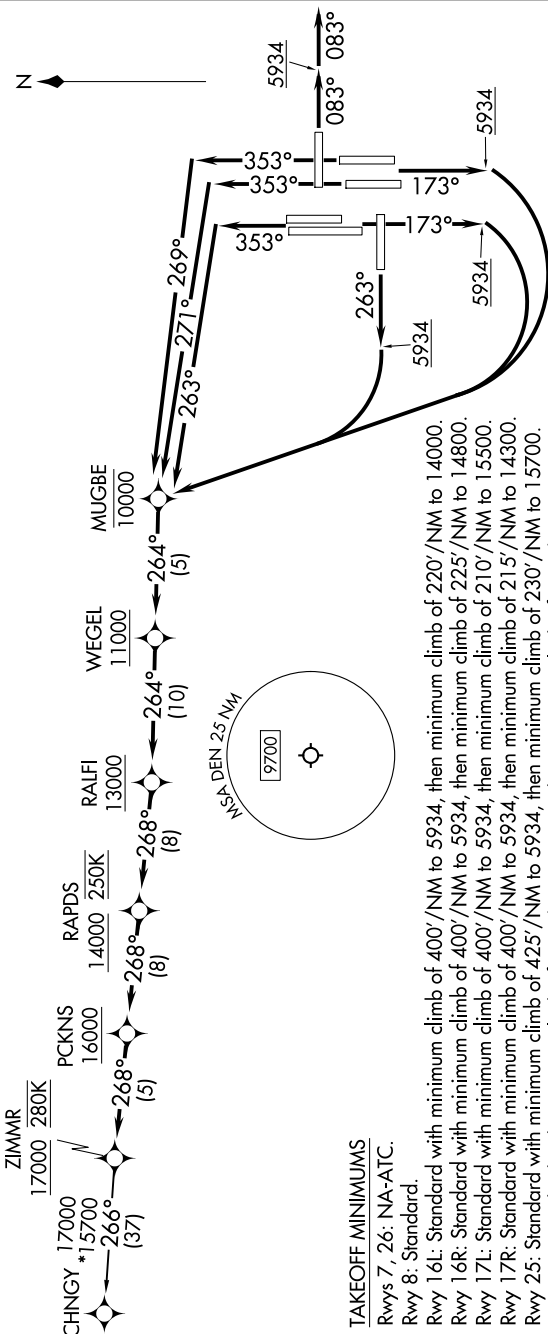
RNAV 1 - DME/DME/IRU or GPS.

TAKEOFF Rwy 8 RADAR required.

TAKEOFF Rws 16L/R, 17L/R, 25, 34L/R, 35L/R

RADAR required for non-GPS equipped aircraft.

NOTE: Turbojets only.
NOTE: Accelerate to 250K upon reaching 10000. If slower speed is required to meet crossing restrictions, advise CINC DEL prior to taxi.



TAKEOFF MINIMUMS

Rwys 7, 26: NA-ATC.

Rwy 8: Standard.

Rwy 16L: Standard with minimum climb of 400'/NM to 5934, then minimum climb of 220'/NM to 14000.

Rwy 16R: Standard with minimum climb of 400'/NM to 5934, then minimum climb of 225'/NM to 14800.

Rwy 17L: Standard with minimum climb of 400'/NM to 5934, then minimum climb of 210'/NM to 15500.

Rwy 17R: Standard with minimum climb of 400'/NM to 5934, then minimum climb of 215'/NM to 14300.

Rwy 25: Standard with minimum climb of 425'/NM to 5934, then minimum climb of 230'/NM to 15700.

Rwy 34L: Standard with minimum climb of 400'/NM to 5934, then minimum climb of 230'/NM to 14600.

Rwy 34R: Standard with minimum climb of 400'/NM to 5934, then minimum climb of 220'/NM to 15700.

Rwy 35L: Standard with minimum climb of 400'/NM to 5934, then minimum climb of 215'/NM to 14000.

Rwy 35R: Standard with minimum climb of 400'/NM to 5934, then minimum climb of 210'/NM to 14500.

(CONTINUED ON FOLLOWING PAGE)

NOTE: Chart not to scale.

SW-1, 16 APR 2026 to 14 MAY 2026