

WAAS CH 97339 W22A	APP CRS 225°	Rwy Ldg 5002 TDZE 107 Apt Elev 112
--	------------------------	---

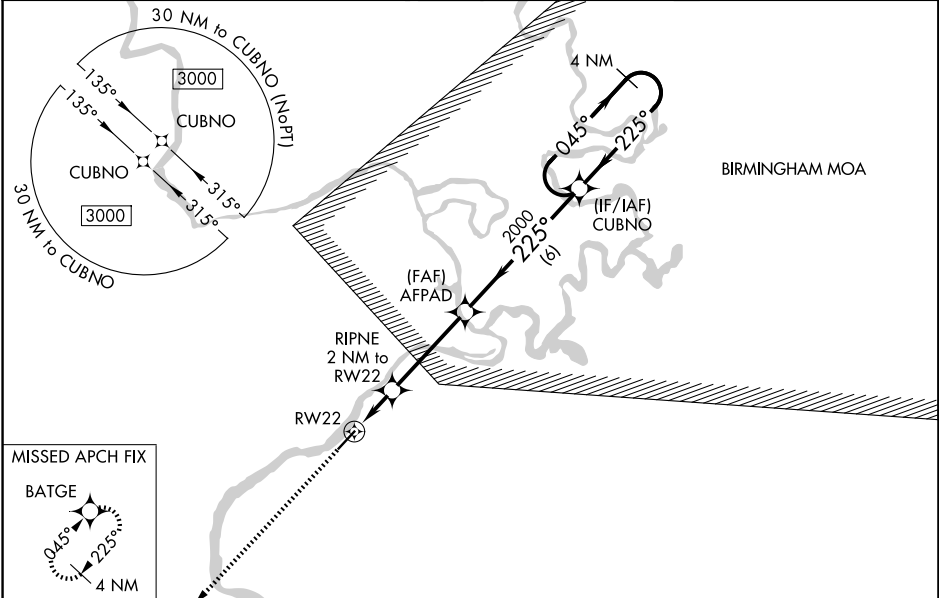
RNAV (GPS) RWY 22

DEMOPOLIS RGNL (DYA)

▼ For uncompensated Baro-VNAV systems, LNAV/VNAV NA below -15°C (5°F) or above 54°C (130°F). DME/DME RNP-0.3 NA. When local altimeter setting not received, use Marion altimeter setting and increase LPV and LNAV/VNAV DA 82 feet and all MDA 100 feet; increase LPV all Cats visibility ¼ mile, increase LNAV/VNAV all Cats and LNAV Cats C/D visibility ⅜ mile, increase Circling Cat C visibility ¼ mile, and Circling Cat D visibility ½ mile. Baro-VNAV and VDP NA when using Marion altimeter setting. Helicopter visibility reduction below ⅜ SM NA.

MISSED APPROACH:
Climb to 3000 direct
BATGE and hold.

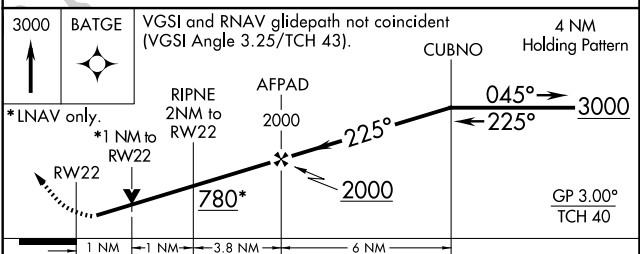
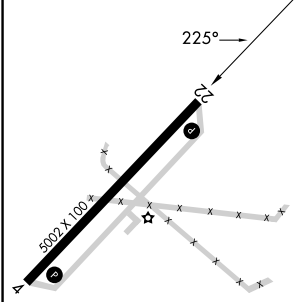
AWOS-3P 119.475	MERIDIAN APP CON* 121.275 348.7	UNICOM 122.8 (CTAF) 0
---------------------------	---	---------------------------------



SE-4, 16 APR 2026 to 14 MAY 2026

SE-4, 16 APR 2026 to 14 MAY 2026

ELEV 112	TDZE 107
----------	----------



CATEGORY	A	B	C	D
LPV DA		369-7/8	262 (300-7/8)	
LNAV/VNAV DA		385-7/8	278 (300-7/8)	
LNAV MDA		480-1	373 (400-1)	
CIRCLING	720-1	608 (700-1)	720-1 3/4 608 (700-1 3/4)	780-2 668 (700-2)