

WAAS CH 60939 W04A	APP CRS 045°	Rwy Ldg 5002 TDZE 112 Apt Elev 112
----------------------------------------	------------------------	---------------------------------------------------------------

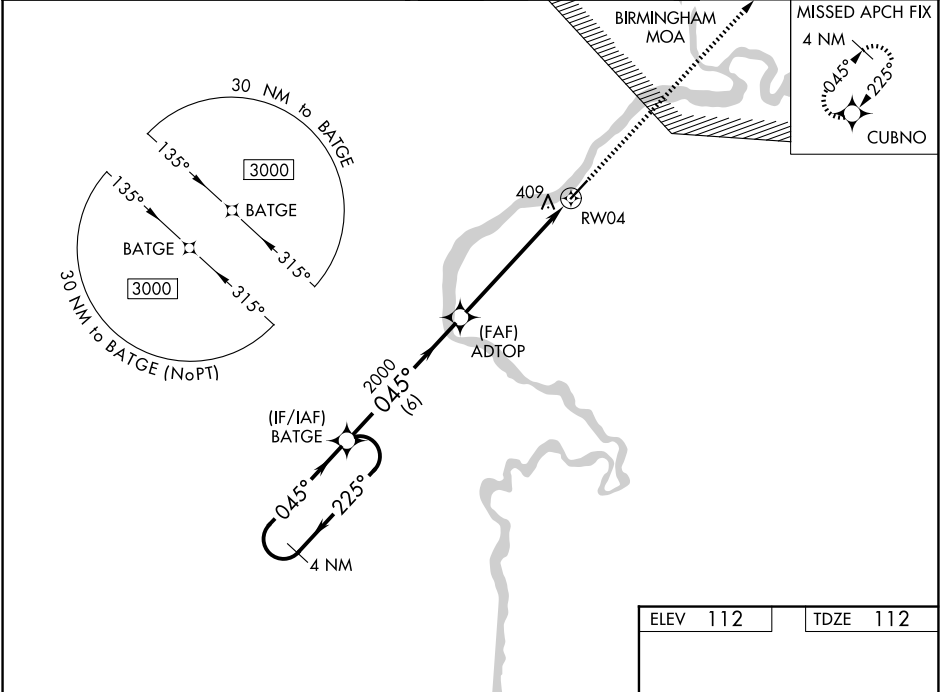
RNAV (GPS) RWY 4

DEMOPOLIS RGNL (DYA)

⚠ For uncompensated Baro-VNAV systems, LNAV/VNAV NA below -15°C (5°F) or above 54°C (130°F).
⚠ DME/DME RNP-0.3 NA. When local altimeter setting not received, use Marion altimeter setting and increase LPV and LNAV/VNAV DA 82 feet and all MDA 100 feet; increase LPV and LNAV/VNAV all Cats visibility 3/8 mile, increase LNAV Cats C/D and Circling Cat C visibility 1/4 mile, and increase Circling Cat D visibility 1/2 mile. Baro-VNAV and VDP NA when using Marion altimeter setting. Helicopter visibility reduction below 3/4 SM NA.

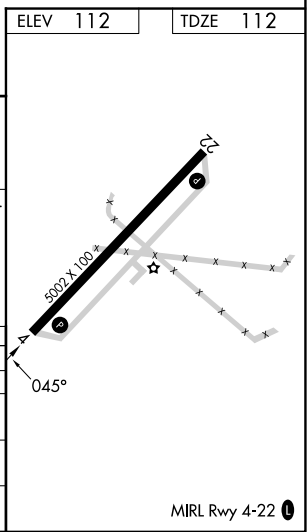
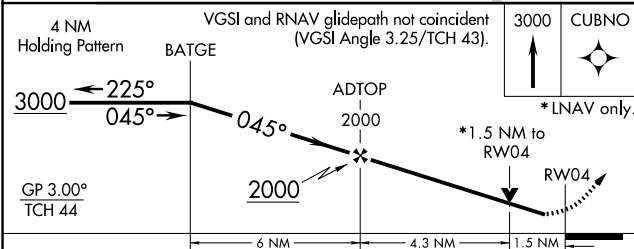
MISSED APPROACH:
Climb to 3000 direct CUBNO and hold.

AWOS-3P 119.475	MERIDIAN APP CON* 121.275 348.7	UNICOM 122.8 (CTAF) 0
---------------------------	-------------------------------------------	---------------------------------



SE-4, 16 APR 2026 to 14 MAY 2026

SE-4, 16 APR 2026 to 14 MAY 2026



CATEGORY	A	B	C	D
LPV DA		362-3/4	250 (300-3/4)	
LNAV/VNAV DA		570-1 1/2	458 (500-1 1/2)	
LNAV MDA	660-1	548 (600-1)	660-1 5/8	548 (600-1 5/8)
CIRCLING	720-1	608 (700-1)	720-1 3/4 608 (700-1 3/4)	780-2 668 (700-2)