

WAAS CH 69643 W16A	APP CRS 166°	Rwy Ldg TDZE Apt Elev	7025 6188 6221
----------------------------------------	------------------------	-----------------------------	-------------------------------------------

RNAV (GPS) RWY 16

AFTON LINCOLN COUNTY/GENERAL BOYD L EDDINS FLD (AFO)

RNP APCH - GPS.

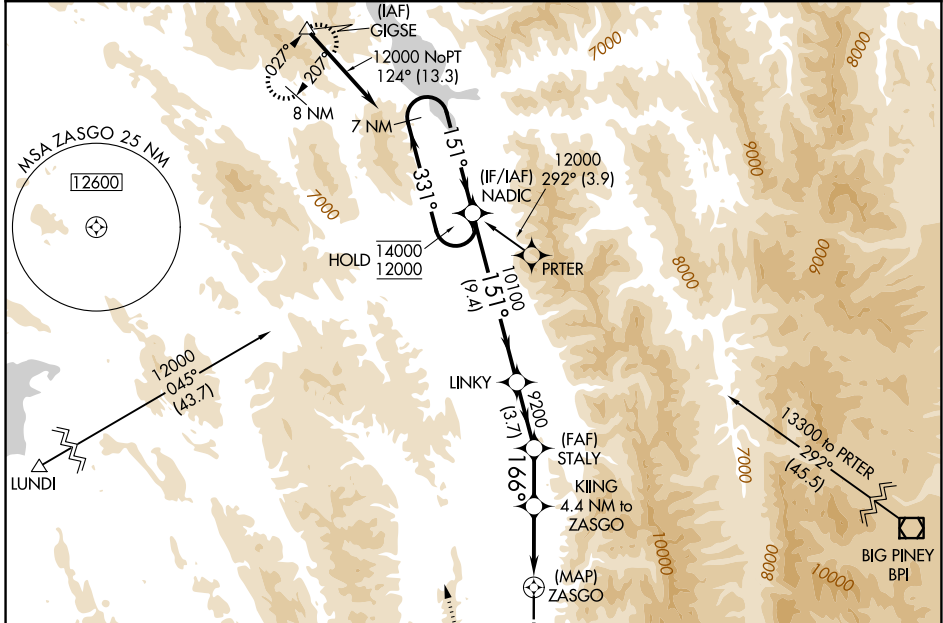
⚠ Rwy 16 helicopter visibility reduction below ¾ SM NA. When Afton altimeter setting not received, procedure NA.

⚠ MISSED APPROACH: (Do not exceed 210K until GIGSE) Climb to 7400 then climbing right turn to 13300 direct GIGSE and hold.

Missed approach requires minimum climb of 420 feet per NM to 9000.

***** Missed approach requires minimum climb of 400 feet per NM to 9000.

AWOS-3PT 119.025	SALT LAKE CENTER 128.35 239.25	UNICOM 122.8 (CTAF)
----------------------------	------------------------------------------	-------------------------------



NW-1, 16 APR 2026 to 14 MAY 2026

NW-1, 16 APR 2026 to 14 MAY 2026

ELEV 6221	TDZE 6188
7400 13300 GIGSE VGSI and RNAV glidepath not coincident (VGSI Angle 3.50/TCH 52).	
KIING 4.4 NM to ZASGO STALY 9200 LINKY 10100 NADIC 7 NM Holding Pattern GP 3.50° TCH 45	
ZASGO 8040 3.1 NM to ZASGO 166° 151° 151° 331° → 14000 ← 151° 12000	
0.5 3.1 1.2 3.1 3.7 9.4 NM	
CATEGORY	A B C D
LPV DA*	6485-1 297 (300-1) NA
LPV DA	7110-2½ 922 (900-2½) NA
LNAV MDA#	7600-1¼ 1412 (1400-1¼) 7600-1½ 1412 (1400-1½) 7600-3 1412 (1400-3) NA
LNAV MDA	7800-1¼ 1612 (1600-1¼) 7800-1½ 1612 (1600-1½) 7800-3 1612 (1600-3) NA

