

WAAS CH <b>45912</b> <b>W18A</b>	APP CRS <b>180°</b>	Rwy Ldg TDZE Apt Elev	<b>5905</b> <b>734</b> <b>734</b>
--	------------------------	-----------------------------	---

# RNAV (GPS) RWY 18

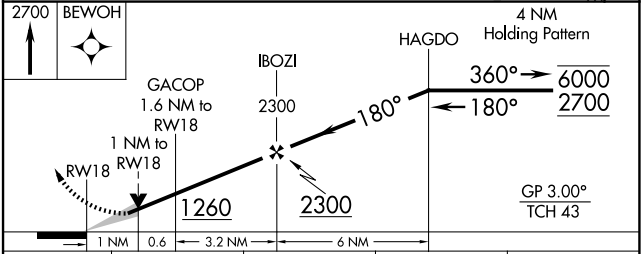
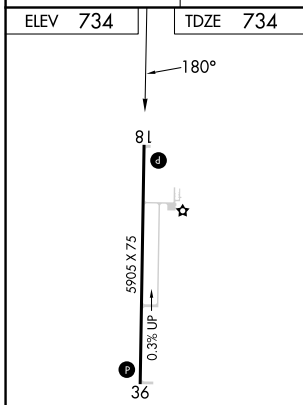
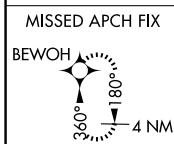
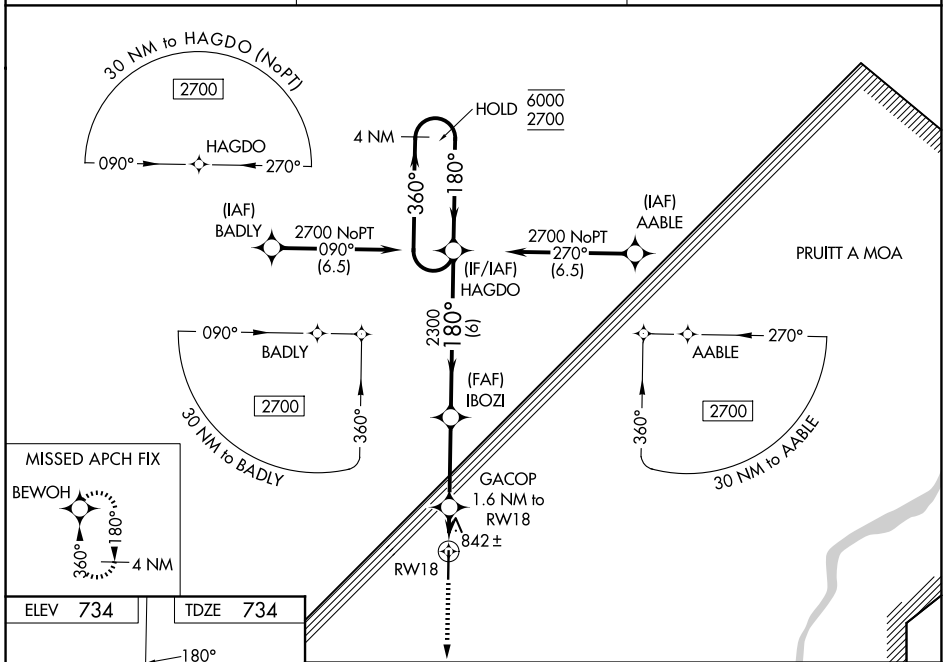
MOUNT STERLING MUNI (I63)

RNP APCH - GPS.

⚠ For uncompensated Baro-VNAV systems, LNAV/VNAV NA below -16°C or above 54°C. Baro-VNAV and VDP NA when using UIN altimeter setting. When local altimeter setting not received, use UIN altimeter setting and increase LPV DA to 1087 feet; increase LNAV/VNAV DA to 1146 feet and all visibilities 1/8 SM; increase all MDAs 60 feet and LNAV visibility Cat C/D 1/4 SM, and Circling visibility Cat C/D 1/4 SM.

MISSED APPROACH: Climb to 2700 direct BEWOH and hold.

AWOS-3PT <b>118.325</b>	KANSAS CITY CENTER <b>126.225 317.775</b>	UNICOM <b>122.8 (CTAF) 0</b>
----------------------------	--	---------------------------------



CATEGORY	A	B	C	D
LPV DA		1041-1	307 (400-1)	
LNAV/VNAV DA		1100-1	366 (400-1)	
LNAV MDA		1100-1	366 (400-1)	
CIRCLING	1160-1 426 (500-1)	1200-1 466 (500-1)	1360-1 3/4 626 (700-1 3/4)	1360-2 626 (700-2)

EC-3, 16 APR 2026 to 14 MAY 2026

EC-3, 16 APR 2026 to 14 MAY 2026