

WAAS CH 97712 W36A	APP CRS 360°	Rwy Ldg TDZE Apt Elev 734	5905 725 734
--	------------------------	-------------------------------------	---

RNAV (GPS) RWY 36

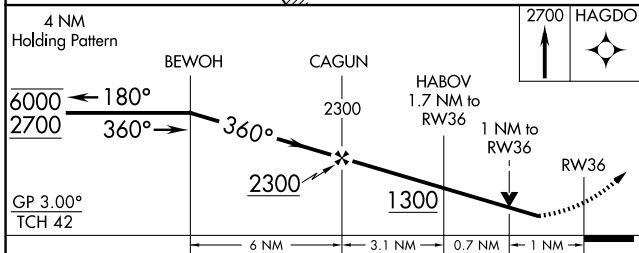
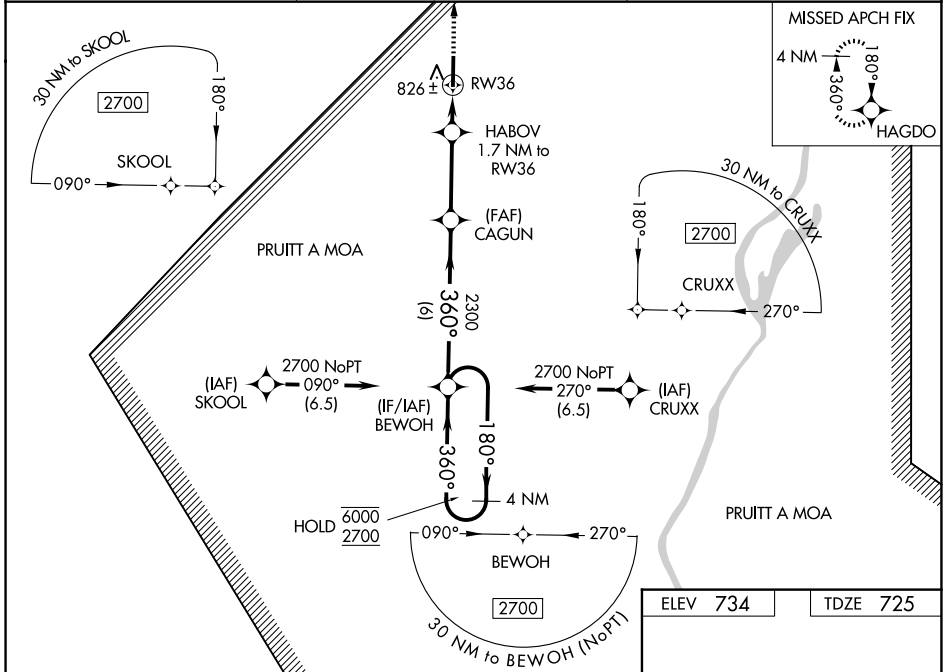
MOUNT STERLING MUNI (I63)

RNP APCH - GPS.

⚠ Rwy 36 helicopter visibility reduction below 3/4 SM NA. For uncompensated Baro-VNAV systems, LNAV/VNAV NA below -16°C or above 54°C. Baro-VNAV and VDP NA when using UIN altimeter setting. When local altimeter setting not received, use UIN altimeter setting and increase LPV DA to 1062 feet; increase LNAV/VNAV DA to 1041; increase all MDAs 60 feet and LNAV visibility Cat C/D 1/8 SM, and Circling visibility Cat C/D 1/4 SM.

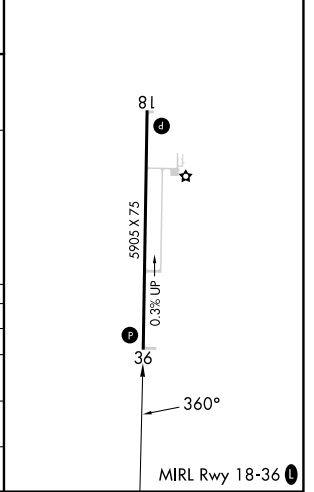
⚠ MISSED APPROACH: Climb to 2700 direct HAGDO and hold.

AWOS-3PT 118.325	KANSAS CITY CENTER 126.225 317.775	UNICOM 122.8 (CTAF) 0
----------------------------	--	---------------------------------



ELEV 734	TDZE 725
----------	----------

CATEGORY	A	B	C	D
LPV DA		1016-1	291 (300-1)	
LNAV/VNAV DA		995-1	270 (300-1)	
LNAV MDA		1080-1	355 (400-1)	
CIRCLING	1160-1 426 (500-1)	1200-1 466 (500-1)	1360-1 3/4 626 (700-1 3/4)	1360-2 626 (700-2)



EC-3, 16 APR 2026 to 14 MAY 2026

EC-3, 16 APR 2026 to 14 MAY 2026