

WAAS CH <b>72940</b> <b>W14A</b>	APP CRS <b>142°</b>	Rwy Ldg TDZE Apt Elev	<b>4002</b> <b>44</b> <b>45</b>
--	------------------------	-----------------------------	---------------------------------------

# RNAV (GPS) RWY 14

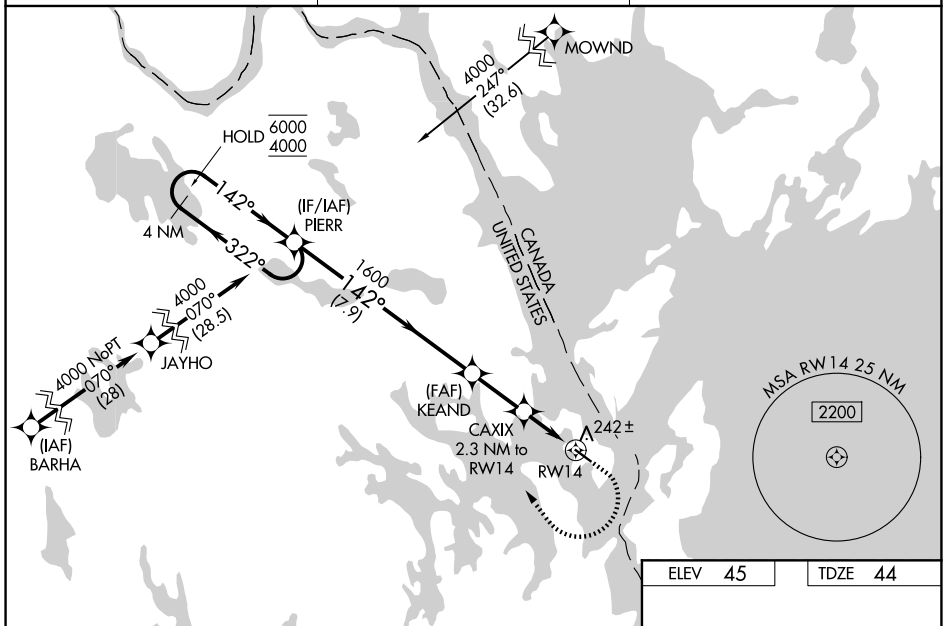
EASTPORT MUNI (EPM)

RNP APCH - GPS.

▼ Rwy 14 helicopter visibility reduction below 1 SM NA. For uncompensated Baro-VNAV systems, LNAV/VNAV NA below -15°C or above 54°C. Baro-VNAV NA when using Hancock County-Bar Harbor altimeter setting. Rwy 14 Straight-in and Circling minimums NA at night. When local altimeter setting not received, use Hancock County/Bar Harbor altimeter setting: increase LPV DA to 462 feet and all visibilities ½ SM; increase LNAV/VNAV DA to 565 feet and all visibilities ½ SM; increase all MDA 160 feet and LNAV visibility Cat C/D ¾ SM and Circling visibility Cat C/D ¾ SM.

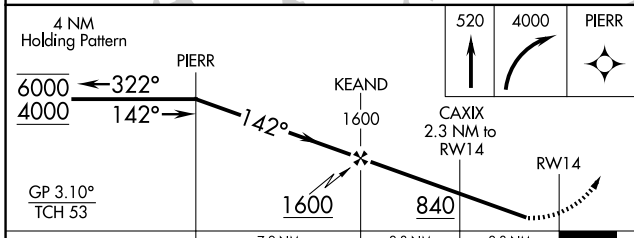
MISSED APPROACH: Climb to 520 then climbing right turn to 4000 direct PIERR and hold, continue climb-in-hold to 4000.

AWOS-AV <b>122.8</b>	BOSTON CENTER <b>124.25 290.5</b>	UNICOM <b>122.8 (CTAF) 0</b>
-------------------------	--------------------------------------	---------------------------------

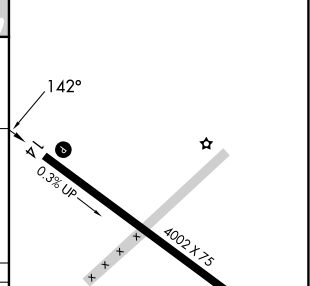


NE-1, 16 APR 2026 to 14 MAY 2026

NE-1, 16 APR 2026 to 14 MAY 2026



ELEV 45	TDZE 44
---------	---------



CATEGORY	A	B	C	D
LPV DA		309-1	265 (300-1)	
LNAV/VNAV DA		412-1	368 (400-1)	
LNAV MDA	500-1	456 (500-1)	500-1 ¾	456 (500-1 ¾)
CIRCLING	580-1	535 (600-1)	640-1 ½ 595 (600-1 ½)	820-2 ½ 775 (800-2 ½)

MIRL Rwy 14-32 0  
REIL Rwy 14 and 32 0