

WAAS CH 90103 W05A	APP CRS 046°	Rwy Ldg TDZE Apt Elev	5498 368 368
--	------------------------	-----------------------------	---

RNAV (GPS) RWY 5

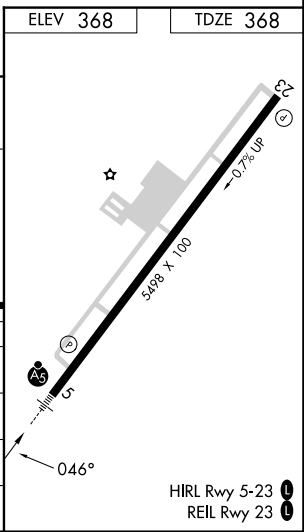
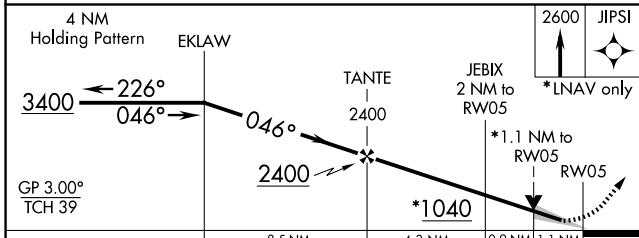
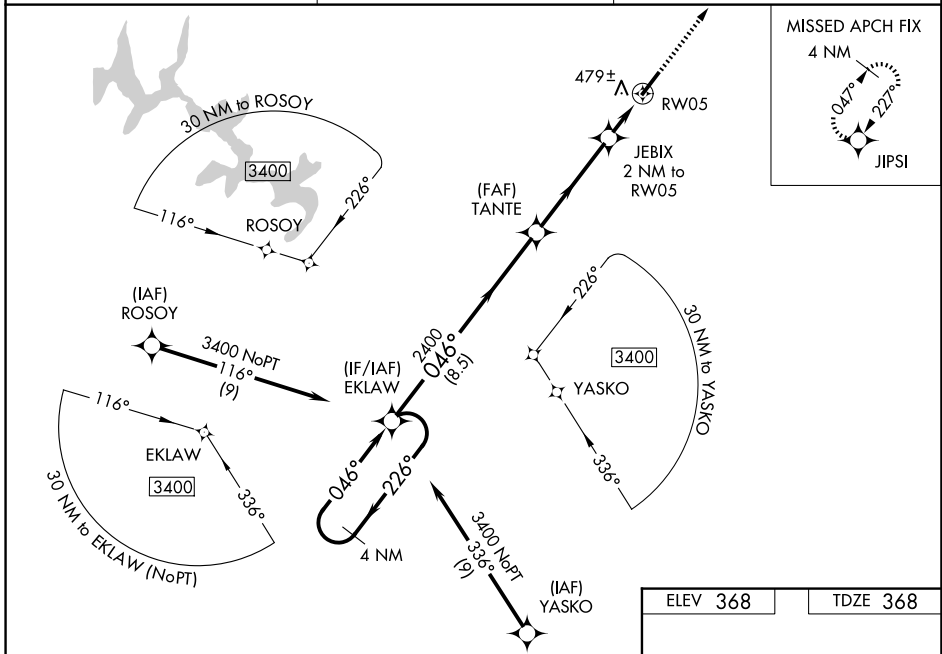
TRIANGLE NORTH EXEC (LHZ)

⚠ For uncompensated Baro-VNAV systems, LNAV/VNAV NA below -15°C (5°F) or above 41°C (105°F). DME/DME RNP-0.3 NA. When local altimeter setting not received, use Raleigh-Durham altimeter setting and increase LPV DA to 633 feet; LNAV/VNAV DA to 705 feet and all visibilities ½ SM. Increase all MDAs 80 feet and visibility Cat C/D ¼ SM. For inop MALSR, increase LNAV/VNAV all Cats visibility to ¾ mile and LNAV Cats C/D visibility to 1 mile. For inop MALSR when using Raleigh-Durham altimeter setting, increase LPV all Cats visibility to ¾ mile. Baro-VNAV and VDP NA with Raleigh-Durham altimeter setting.



MISSED APPROACH:
Climb to 2600 direct
JIPSI and hold.

AWOS-3 118.325	RALEIGH APP CON 125.3 353.675	UNICOM 123.0 (CTAF)
--------------------------	---	-------------------------------



CATEGORY	A	B	C	D
LPV DA		568-½	200 (200-½)	
LNAV/VNAV DA		640-½	272 (300-½)	
LNAV MDA	740-½	372 (400-½)	740-⅝	372 (400-⅝)
CIRCLING	800-1 432 (500-1)	840-1 472 (500-1)	980-1¼ 612 (700-1¼)	1000-2 632 (700-2)

SE-2, 16 APR 2026 to 14 MAY 2026

SE-2, 16 APR 2026 to 14 MAY 2026