

APP CRS	Rwy Idg	<b>5000</b>
<b>357°</b>	TDZE	<b>107</b>
	Apt Elev	<b>107</b>

# RNAV (GPS) RWY 36

ALLEN PARISH (ACP)

RNP APCH - GPS.

**▼** Procedure NA at night. Rwy 36 helicopter visibility reduction below 1 SM NA.  
**▲** When local altimeter setting not received, use Alexandria Intl altimeter setting: increase all MDAs 100 feet and visibility LNAV Cat C ¼ SM and Circling Cat C ½ SM.

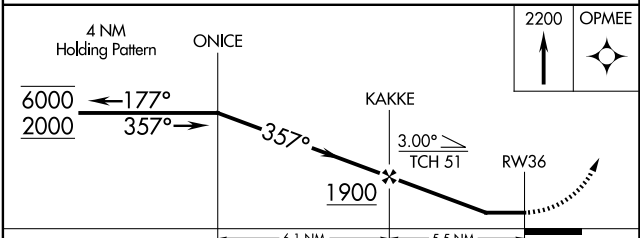
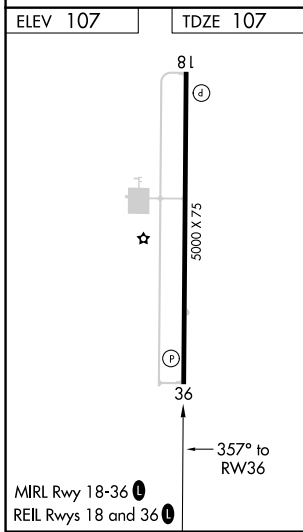
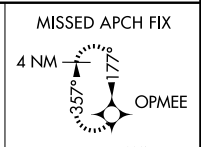
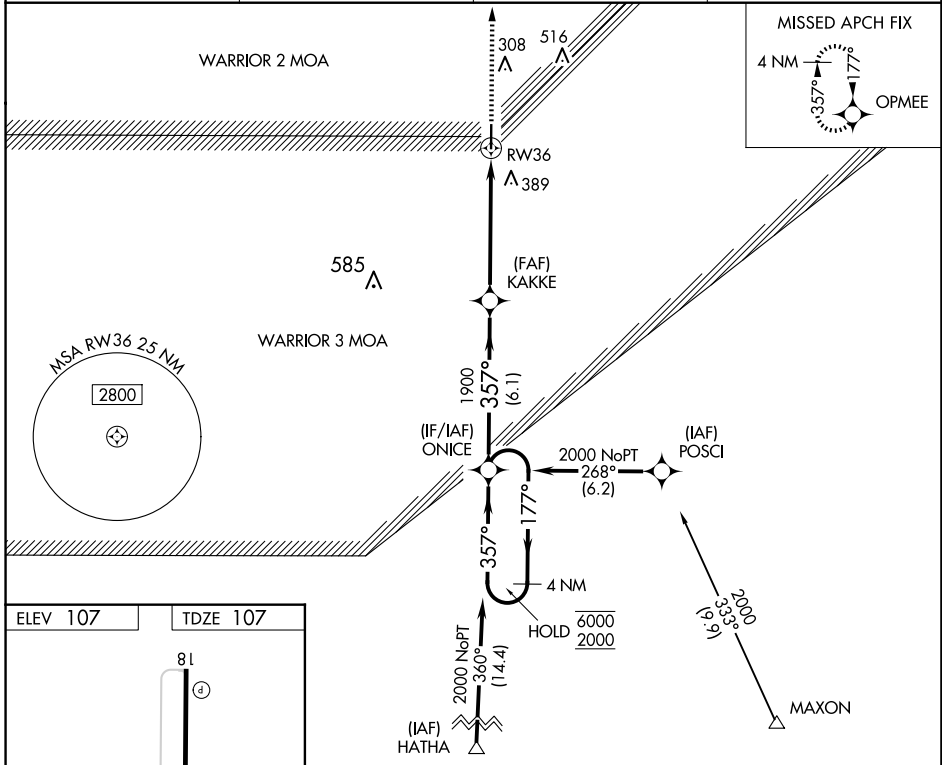
MISSED APPROACH: Climb to 2200 direct OPMEE and hold.

AWOS-3PT  
**118.275**

POLK APP CON  
**123.7 261.3**

GCO  
**135.075**

UNICOM  
**122.8 (CTAF)** **①**



CATEGORY	A	B	C	D
LNAV MDA	540-1	433 (500-1)	540-1¼ 433 (500-1¼)	NA
CIRCLING	560-1 453 (500-1)	700-1 593 (600-1)	760-1¾ 653 (700-1¾)	NA

SC-4, 16 APR 2026 to 14 MAY 2026

SC-4, 16 APR 2026 to 14 MAY 2026