

| | | |
|--|------------------------|---|
| WAAS CH 56639 W11A | APP CRS 114° | Rwy Ldg 2714 TDZE 15 Apt Elev 15 |
|--|------------------------|---|

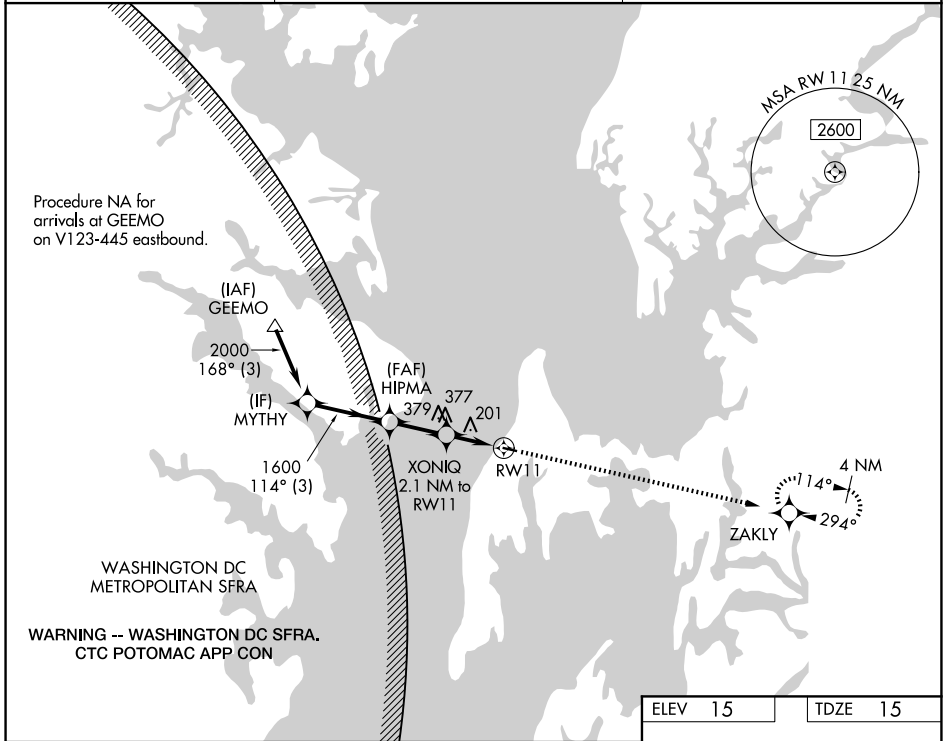
RNAV (GPS) RWY 11

BAY BRIDGE (W29)

RNP APCH. MISSED APPROACH: Climb to 2100 direct ZAKLY and hold.

For uncompensated Baro-VNAV systems, LNAV/VNAV NA below -15°C or above 54°C.

| | | |
|--------------------------|---|-----------------------------------|
| AWOS-3 120.575 | POTOMAC APP CON 119.0 282.275 | UNICOM 122.725 (CTAF) 0 |
|--------------------------|---|-----------------------------------|



NE-3, 16 APR 2026 to 14 MAY 2026

NE-3, 16 APR 2026 to 14 MAY 2026

| | | | |
|--|----------------------|--|-----|
| ELEV 15 | | TDZE 15 | |
| VGSi and RNAV glidepath not coincident (VGSi Angle 3.00/TCH 30). | | | |
| MYTHY 2000 GP 3.50° TCH 40 | | HIPMA 1600 XONIQ 2.1 NM to RW11 *820 RW11 | |
| 114° | | *1.3 NM to RW11 | |
| 3 NM | | 2.1 NM | |
| 1600 | | 2100 ZAKLY *LNAV only. | |
| 114° | | 0.3% UP | |
| 2714 X 60 | | 29 | |
| CATEGORY | A | B | C D |
| LPV DA | 265-1 | 250 (300-1) | NA |
| LNAV/VNAV DA | 489-1 3/8 | 474 (500-1 3/8) | NA |
| LNAV MDA | 460-1 | 445 (500-1) | NA |
| CIRCLING | 500-1 485 (500-1) | 800-1 785 (800-1) | NA |

