

KABEE THREE ARRIVAL (RNAV)

CONCORD, NORTH CAROLINA

CHARLOTTE APP CON
 126.15 282.325
 CLT D-ATIS ARR
 121.15
 JQG ATIS
 133.675
 RUQ AWOS-3
 118.175
 SVH AWOS-3
 119.225
 VUJ AWOS-3
 128.175
 CONCORD TOWER *
 134.65 (CTAF)
 STANLY TOWER *
 126.275 (CTAF) 291.9

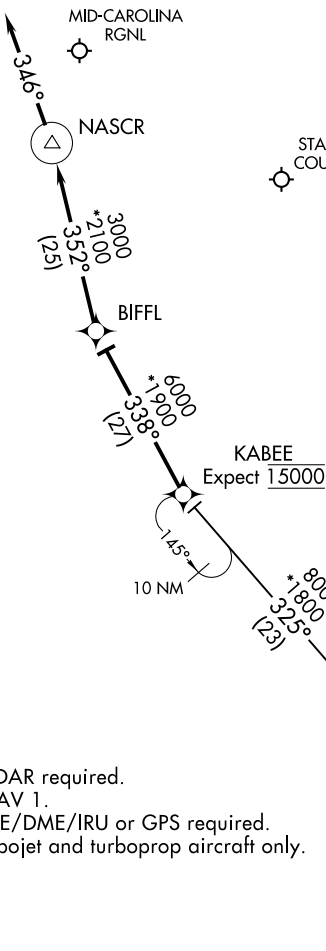
STATESVILLE
RGNL

MID-CAROLINA
RGNL

NASCR

STANLY
COUNTY

CONCORD-
PADGETT
RGNL



- NOTE: RADAR required.
- NOTE: RNAV 1.
- NOTE: DME/DME/IRU or GPS required.
- NOTE: Turbojet and turboprop aircraft only.

NOTE: Chart not to scale.

ARRIVAL ROUTE DESCRIPTION

FLORENCE TRANSITION (FLO.KABEE3)

From KABEE on track 338° to BIFFL, then on track 352° to NASCR, then on heading 346°, expect RADAR vectors to final approach course.