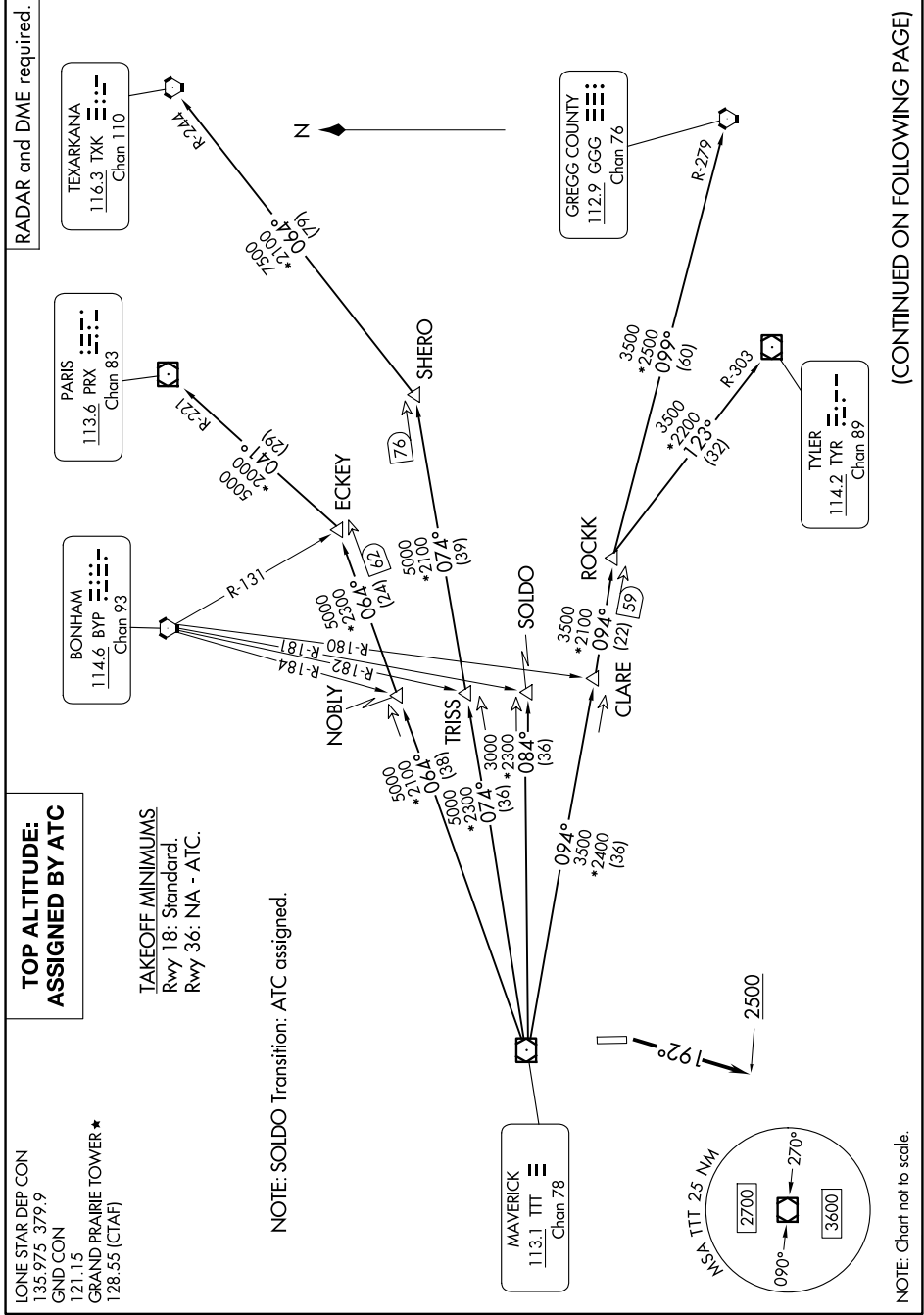


SC-2, 16 APR 2026 to 14 MAY 2026



**TOP ALTITUDE:
 ASSIGNED BY ATC**

TAKEOFF MINIMUMS
 Rwy 18: Standard.
 Rwy 36: NA - ATC.

LONE STAR DEP CON
 135.975 379.9
 GND CON
 121.15
 GRAND PRAIRIE TOWER ★
 128.55 (CTAF)

NOTE: SOLDO Transition: ATC assigned.

NOTE: Chart not to scale.

(CONTINUED ON FOLLOWING PAGE)

SC-2, 16 APR 2026 to 14 MAY 2026