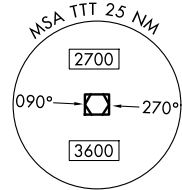


JOE POOL EIGHT DEPARTURE

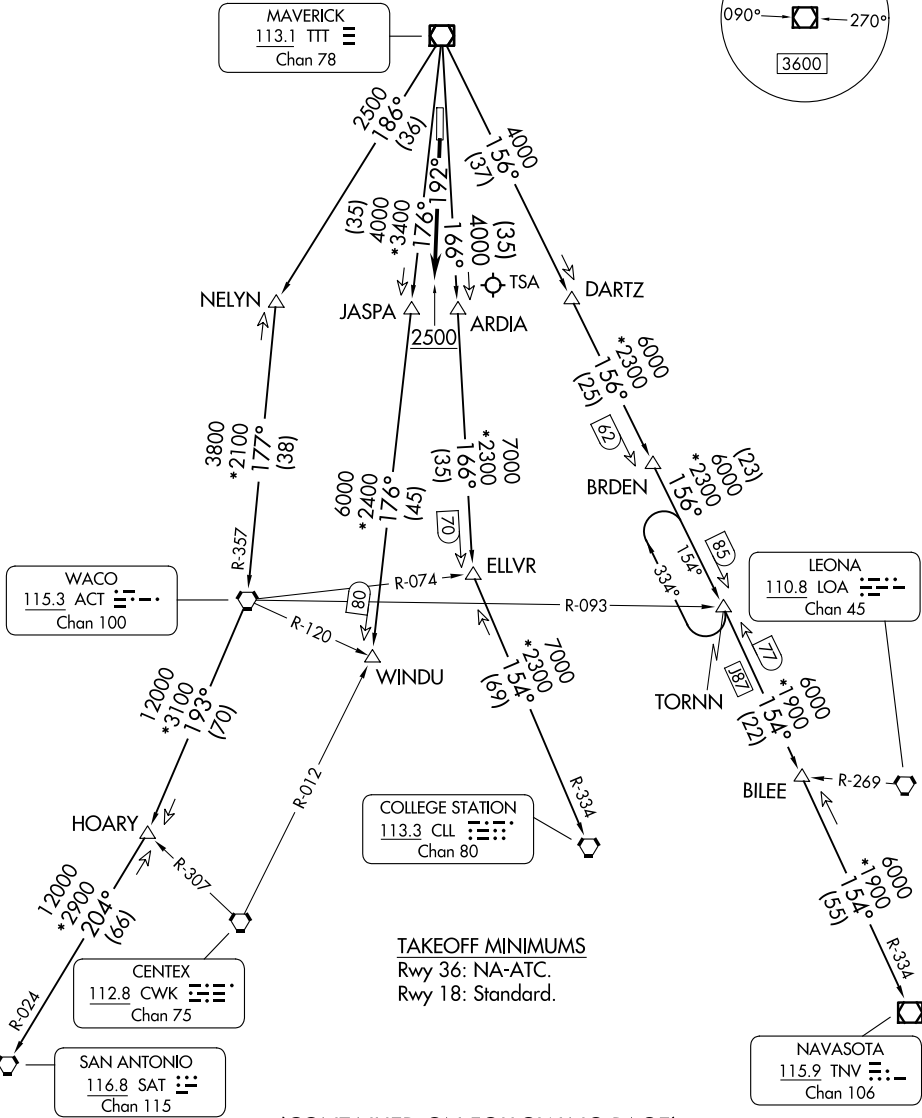
LONE STAR DEP CON
135.975 379.9
GND CON
121.15
GRAND PRAIRIE TOWER *
128.55 (CTAF)

RADAR and DME required.

**TOP ALTITUDE:
ASSIGNED BY ATC**



MAVERICK
113.1 TTT
Chan 78



TAKEOFF MINIMUMS
Rwy 36: NA-ATC.
Rwy 18: Standard.

(CONTINUED ON FOLLOWING PAGE)

NOTE: Chart not to scale.

SC-2, 16 APR 2026 to 14 MAY 2026

SC-2, 16 APR 2026 to 14 MAY 2026

JOE POOL EIGHT DEPARTURE