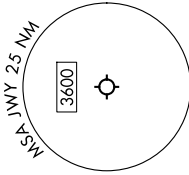


BOTCH ONE DEPARTURE (RNAV)

MIDLOTHIAN/WAXAHACHIE, TEXAS

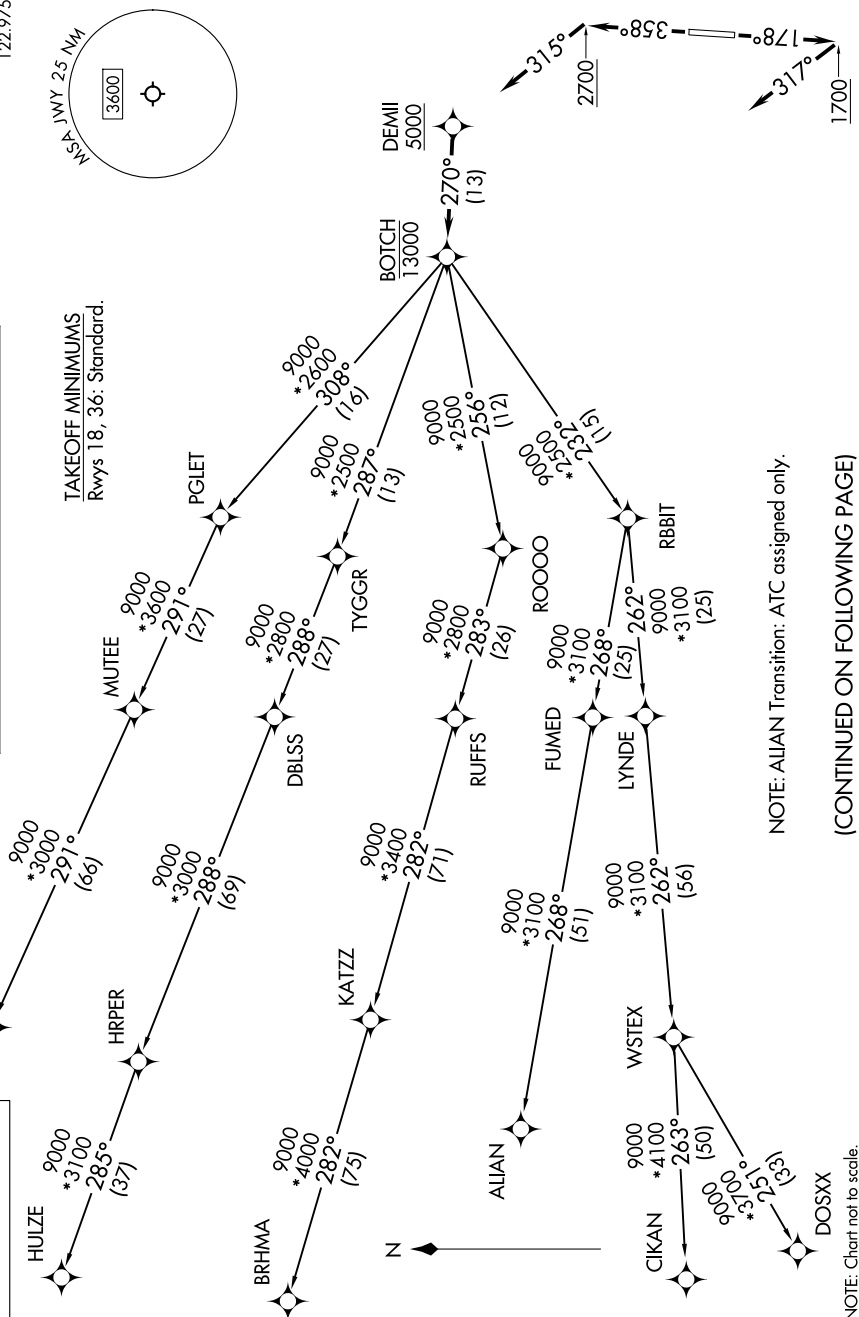
LONE STAR DEP CON
125.2 343.65
CTAF
122.975



RNAV 1 - DME/DME/IRU or GPS required.
RADAR required for non-GPS equipped aircraft.

TAKEOFF MINIMUMS
Rwys 18, 36: Standard.

**TOP ALTITUDE:
ASSIGNED BY ATC**



NOTE: ALIAN Transition: ATC assigned only.

(CONTINUED ON FOLLOWING PAGE)

BOTCH ONE DEPARTURE (RNAV)

MIDLOTHIAN/WAXAHACHIE, TEXAS

NOTE: Chart not to scale.