

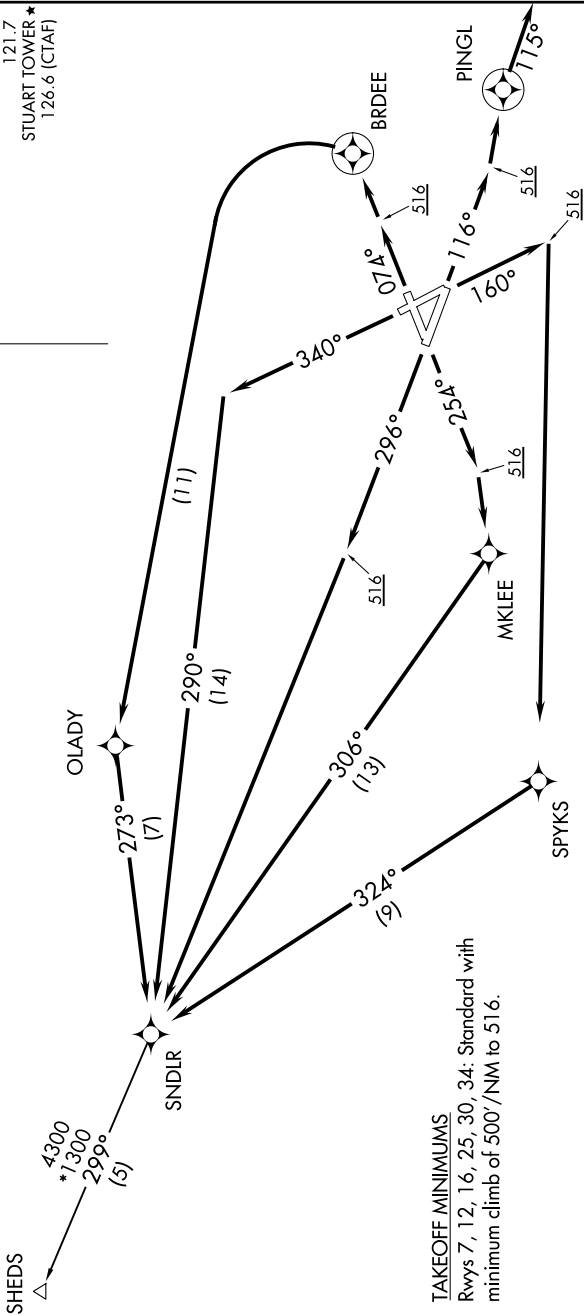
SNDLR THREE DEPARTURE (RNAV)

PALM BEACH DEP CON
123.625
ATIS
134.475
GND CON
121.7
STUART TOWER *
126.6 (CTAF)



**TOP ALTITUDE:
3000**

RNAV 1 - DME/DME/IRU or GPS.
RADAR required.



TAKEOFF MINIMUMS
Rwys 7, 12, 16, 25, 30, 34: Standard with
minimum climb of 500'/NM to 516.

NOTE: Jet and turboprop aircraft only.
NOTE: Transponder code will be issued via SUA ground
control or PBI APP CON when tower closed.

NOTE: Chart not to scale.

(CONTINUED ON FOLLOWING PAGE)

SNDLR THREE DEPARTURE (RNAV)