

CHIEF NINE DEPARTURE

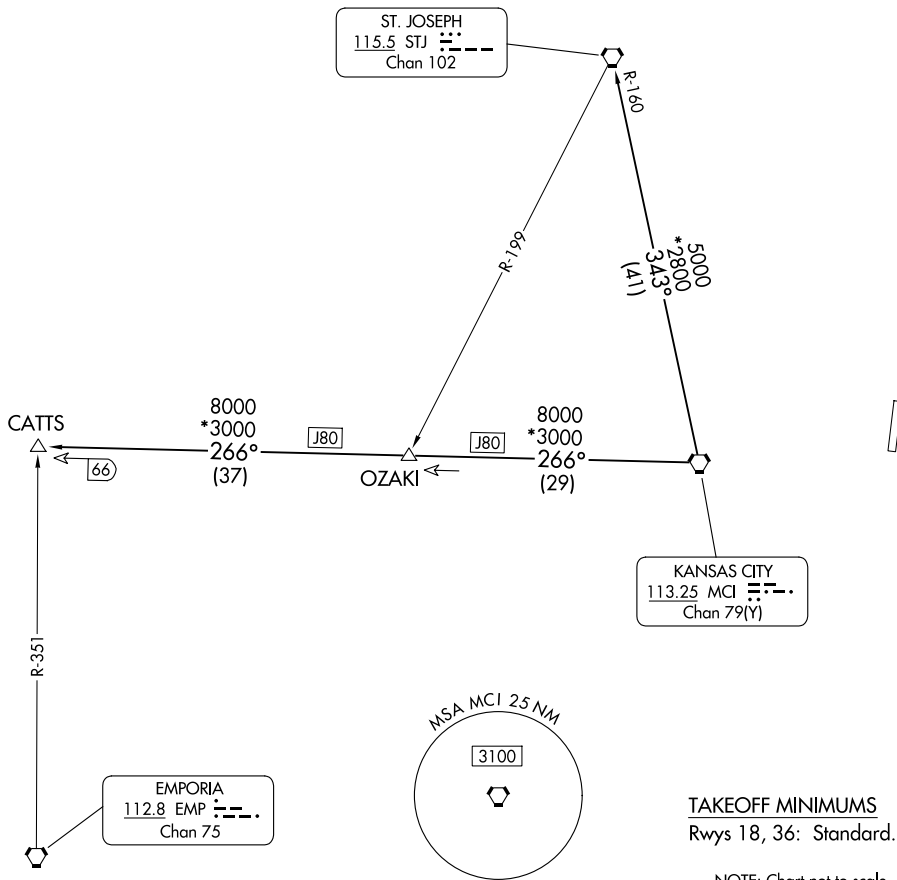
AL-9229 (FAA)

MIDWEST NTL AIR CENTER (GPH)
MOSBY, MISSOURI

KANSAS CITY DEP CON
118.4 307.35
CLNC DEL
118.2

**TOP ALTITUDE:
10000**

RADAR required.



NC-3, 16 APR 2026 to 14 MAY 2026

NC-3, 16 APR 2026 to 14 MAY 2026

TAKEOFF MINIMUMS
Rwys 18, 36: Standard.

NOTE: Chart not to scale.



DEPARTURE ROUTE DESCRIPTION

TAKEOFF ALL RUNWAYS: Climb on assigned heading for RADAR vectors to appropriate route. Maintain 10000 or as assigned by ATC, expect filed altitude 10 minutes after departure.

CATTS TRANSITION (CHIEF9.CATTS): From over MCI VORTAC on MCI R-266 to CATTS.

ST. JOSEPH TRANSITION (CHIEF9.STJ): From over MCI VORTAC on MCI R-343 and STJ R-160 to STJ VORTAC.

CHIEF NINE DEPARTURE

(CHIEF9.MCI) 05OCT23

MOSBY, MISSOURI
MIDWEST NTL AIR CENTER (GPH)