

WAAS CH 70323 W18A	APP CRS 184°	Rwy Ldg TDZE Apt Elev	5502 777 777
---------------------------------	------------------------	-----------------------------	-----------------------------------------

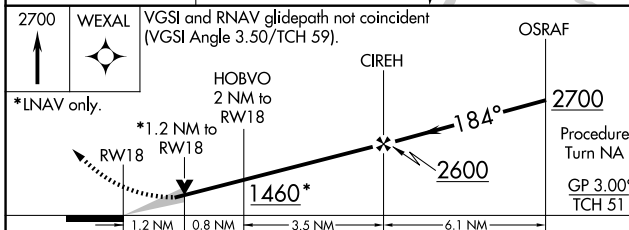
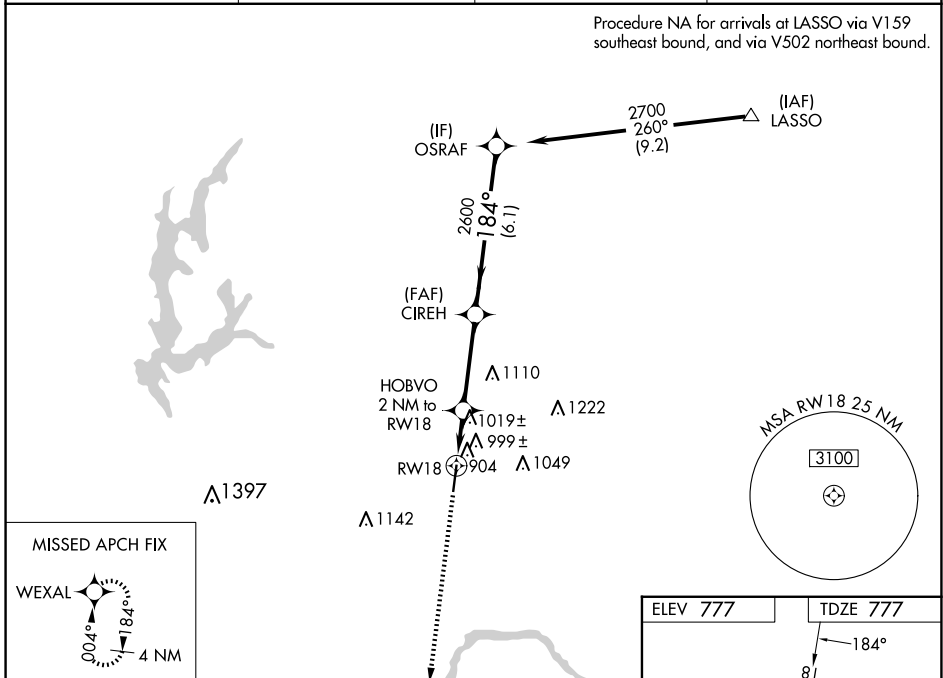
RNAV (GPS) RWY 18

MIDWEST NTL AIR CENTER (GPH)

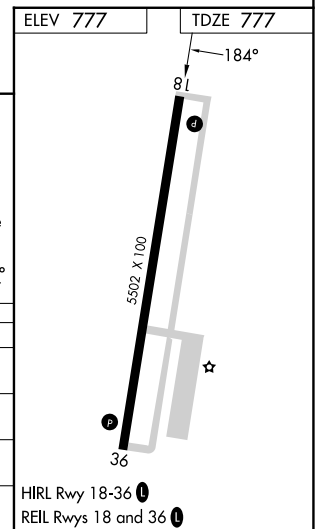
NA For uncompensated Baro-VNAV systems, LNAV/VNAV NA below -16°C (4°F) or above 54°C (130°F). DME/DME RNP- 0.3 NA.
Baro-VNAV and VDP NA when using Kansas City Intl altimeter setting.
Obtain local altimeter setting on CTAF; when not received, use Kansas City Intl altimeter setting and increase all DAs 79 feet and all LPV and LNAV/VNAV visibilities ¼ mile; increase all MDAs 80 feet and circling visibility Cat C ¼ mile.

MISSED APPROACH: Climb to 2700 direct WEXAL and hold.

AWOS-3P 120.275	KANSAS CITY APP CON 118.4 307.35	CLNC DEL 118.2	UNICOM 122.7 (CTAF)
---------------------------	--------------------------------------------	--------------------------	-------------------------------



CATEGORY	A	B	C	D
LPV DA	1189-1½	412 (500-1½)		NA
LNAV/VNAV DA	1324-2	547 (600-2)		NA
LNAV MDA	1280-1	503 (600-1)	1280-1½ 503 (600-1½)	NA
CIRCLING	1300-1 523 (600-1)	1320-1 543 (600-1)	1360-1½ 583 (600-1½)	NA



NC-3, 16 APR 2026 to 14 MAY 2026

NC-3, 16 APR 2026 to 14 MAY 2026