

(TIFTO8.MCI) 23278

TIFTO EIGHT DEPARTURE

AL-9229 (FAA)

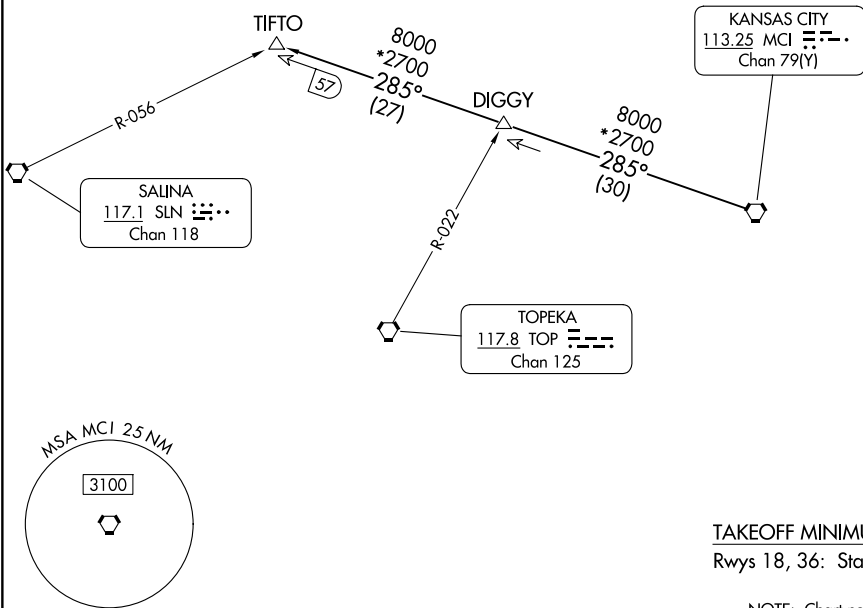
MIDWEST NTL AIR CENTER (GPH)
MOSBY, MISSOURI

**TOP ALTITUDE:
10000**

RADAR and DME required.

KANSAS CITY DEP CON
118.4 307.35
CLNC DEL
118.2

NC-3, 16 APR 2026 to 14 MAY 2026



NC-3, 16 APR 2026 to 14 MAY 2026

TAKEOFF MINIMUMS

Rwys 18, 36: Standard.

NOTE: Chart not to scale



DEPARTURE ROUTE DESCRIPTION

TAKEOFF ALL RUNWAYS: Climb on assigned heading for RADAR vectors to appropriate route. Maintain 10000, expect filed altitude 10 minutes after departure.

TIFTO TRANSITION (TIFTO8.TIFTO): From over MCI VORTAC on MCI R-285 to TIFTO.

TIFTO EIGHT DEPARTURE

(TIFTO8.MCI) 05OCT23

MOSBY, MISSOURI
MIDWEST NTL AIR CENTER (GPH)