

RNAV (GPS) Y RWY 9

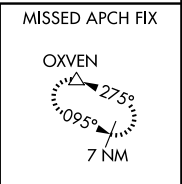
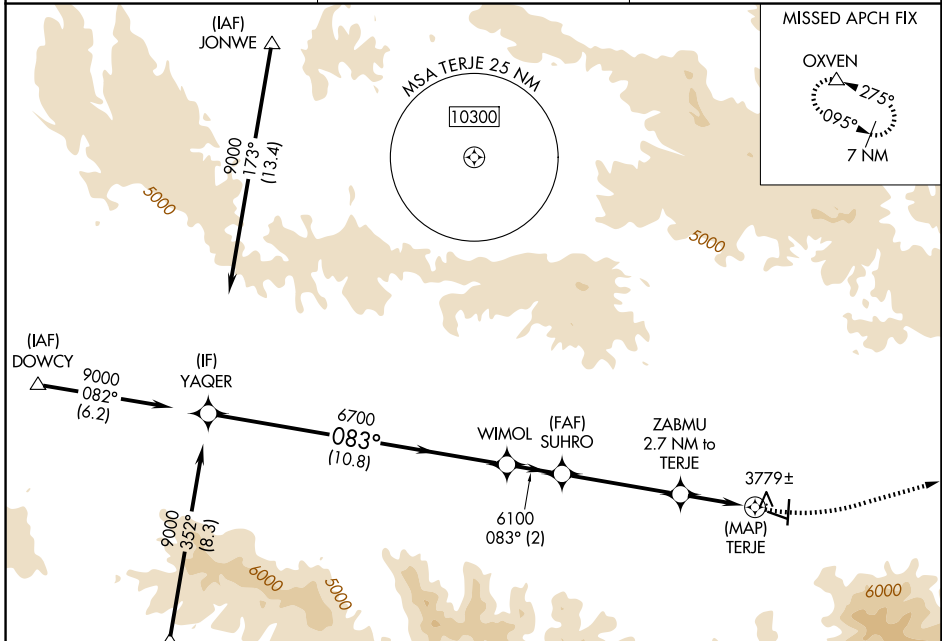
GRANT COUNTY RGNL/OGLIVIE FLD (GCD)

APP CRS 083°	Rwy Ldg TDZE Apt Elev	4100 3669 3703
------------------------	-----------------------------	---

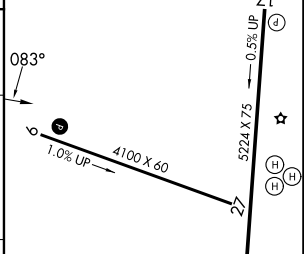
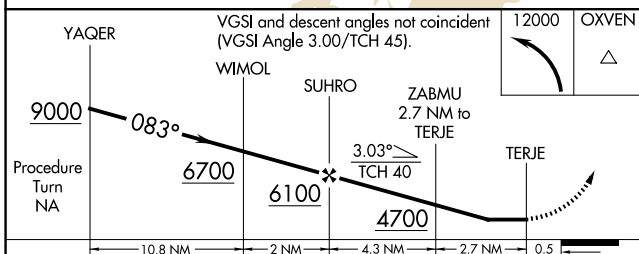
⚠ When local altimeter setting not received, procedure NA.
⚠ Circling NA south of Rwy 9-27. DME/DME RNP-0.3 NA.
 Helicopter visibility reduction below 3/4 SM not authorized.

MISSED APPROACH: Climbing left turn to 12000 direct OXVEN and hold, continue climb-in-hold to 12000.

AWOS-3 118.375	SEATTLE CENTER 128.15 257.75	UNICOM 122.8 (CTAF) 0
--------------------------	--	---------------------------------



ELEV 3703	TDZE 3669
-----------	-----------



CATEGORY	A	B	C	D
LNVA MDA	4280-1	611 (600-1)	4280-1 3/4 611 (600-1 3/4)	NA
CIRCLING	4280-1 577 (600-1)	4520-1 1/4 817 (900-1 1/4)	5160-3 1457 (1500-3)	NA

REIL Rwy 17 and 9 **0**
 MIRL Rwy 9-27 and 17-35 **0**

NW-1, 16 APR 2026 to 14 MAY 2026

NW-1, 16 APR 2026 to 14 MAY 2026