

WAAS CH 73010 W09A	APP CRS 091°	Rwy Ldg TDZE Apt Elev	4100 3669 3703
--	------------------------	-----------------------------	---

RNAV (GPS) Z RWY 9

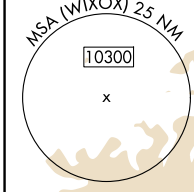
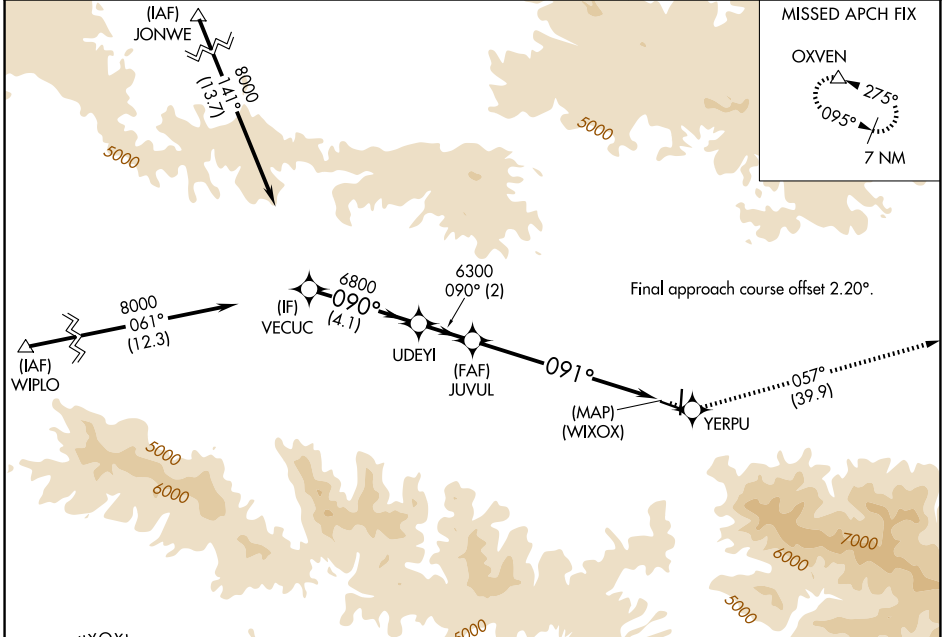
GRANT COUNTY RGNL/OGLIVIE FLD (GCD)

RNP APCH - GPS.

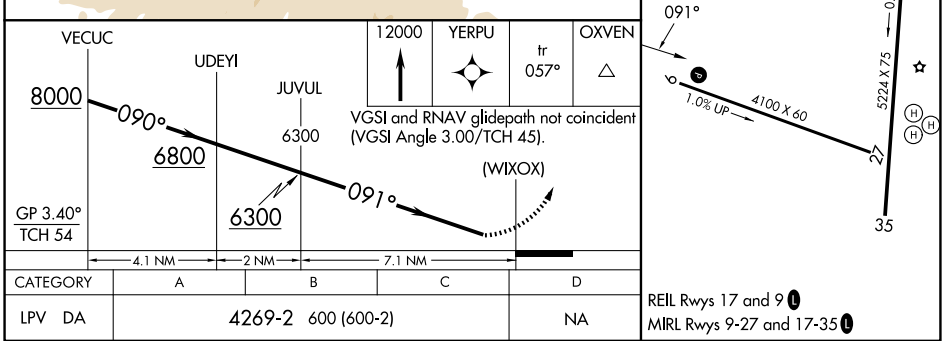
▼ When local altimeter setting not received, procedure NA.
Rwy 9 helicopter visibility reduction below 3/4 SM NA.

MISSED APPROACH: Climb to 12000 direct YERPU and on track 057° to OXVEN and hold, continue climb-in-hold to 12000.

AWOS-3 118.375	SEATTLE CENTER 128.15 257.75	UNICOM 122.8 (CTAF) 0
--------------------------	--	---------------------------------



ELEV 3703	TDZE 3669
-----------	-----------



CATEGORY	A	B	C	D
LPV DA	4269-2	600 (600-2)		NA

REIL Rwy 17 and 9 0
MIRL Rwy 9-27 and 17-35 0

NW-1, 16 APR 2026 to 14 MAY 2026

NW-1, 16 APR 2026 to 14 MAY 2026