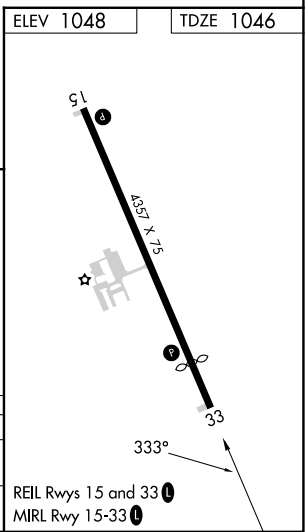
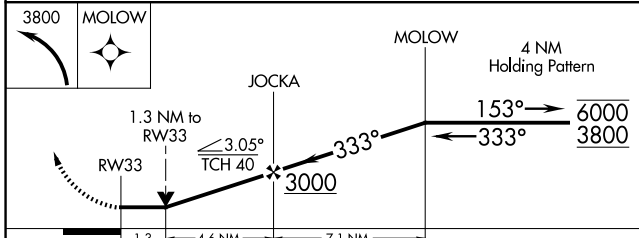
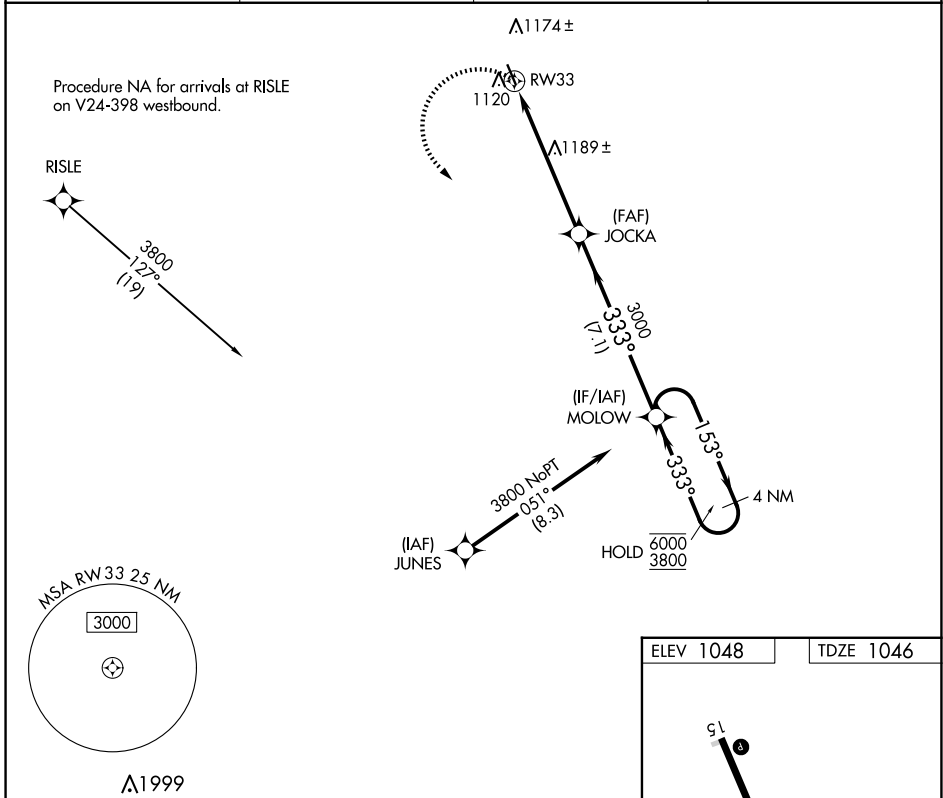


APP CRS	Rwy Idg	3715
333°	TDZE	1046
	Apt Elev	1048

RNAV (GPS) RWY 33

GRANITE FALLS MUNI/LENZEN-ROE-FAGEN MEML FLD (GDB)

RNP APCH.		MISSED APPROACH: Climbing left turn to 3800 direct to MOLOW and hold.	
AWOS-3 120.1	MINNEAPOLIS CENTER 127.1 290.2	GCO 121.725	UNICOM 122.8 (CTAF) 0



CATEGORY	A	B	C	D
LNVA MDA	1480-1	434 (500-1)	1480-1¼ 434 (500-1¼)	1480-1½ 434 (500-1½)
CIRCLING	1540-1 492 (500-1)	1580-1 532 (600-1)	1580-1½ 532 (600-1½)	1700-2 652 (700-2)

RNAV (GPS) RWY 33

NC-1, 16 APR 2026 to 14 MAY 2026

NC-1, 16 APR 2026 to 14 MAY 2026