

WAAS CH 69533 W18A	APP CRS 177°	Rwy Ldg TDZE Apt Elev	3400 1221 1221
--	------------------------	-----------------------------	---

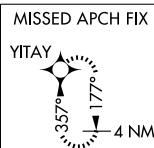
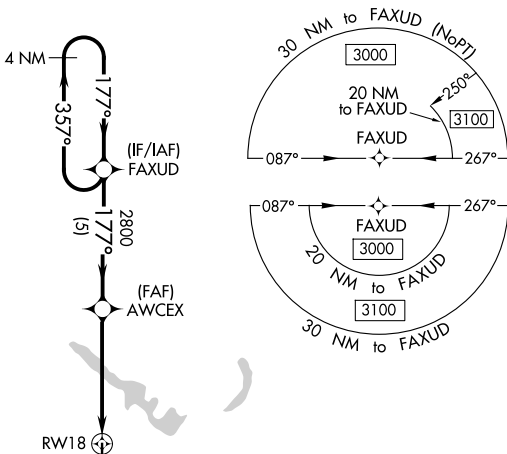
RNAV (GPS) RWY 18

GUTHRIE COUNTY RGNL (GCT)

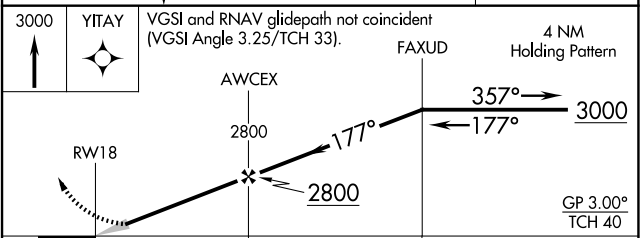
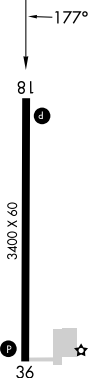
▽ Baro-VNAV NA. DME/DME RNP-0.3 NA. Use Audubon altimeter setting; when not received, use Carroll altimeter setting and increase LPV DA to 1535, LNAV/VNAV DA to 1748 and all MDA 20 feet; increase LNAV/VNAV all Cats visibility 1/8 mile.

△ NA MISSED APPROACH: Climb to 3000 direct YITAY and hold.

ADU AWOS-3 118.075	DES MOINES APP CON 123.9 360.7	UNICOM 122.8 (CTAF) ①
------------------------------	--	--



ELEV 1221	TDZE 1221
-----------	-----------



CATEGORY	A	B	C	D
LPV DA	1531-1	310 (400-1)		NA
LNAV/VNAV DA	1744-1¾	523 (600-1¾)		NA
LNAV MDA	1720-1	499 (500-1)		NA
CIRCLING	1740-1 519 (600-1)	1880-1 659 (700-1)		NA