

APP CRS **176°**  
 Rwy Ldg **4001**  
 TDZE **1585**  
 Apt Elev **1587**

# RNAV (GPS) RWY 18

HINTON MUNI (208)

RNP APCH-GPS.

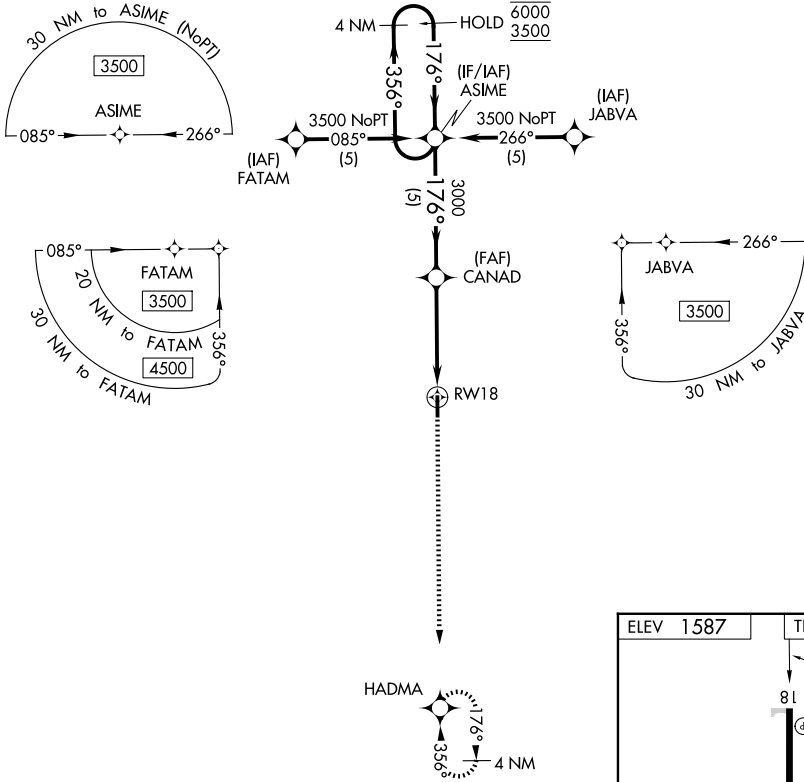
**▽** Baro-VNAV NA. Use Weatherford altimeter setting.  
**▲** NA

MISSED APPROACH: Climb to 3600 direct HADMA and hold.

OJA AWOS-3PT  
**118.575**

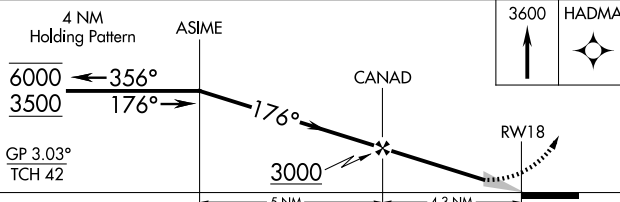
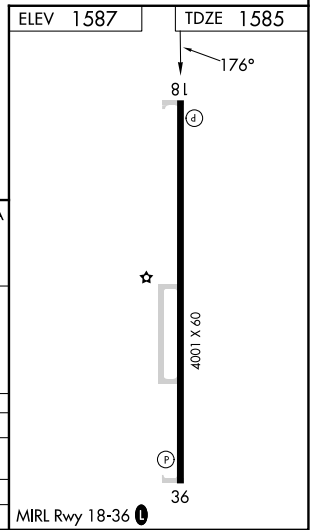
FORT WORTH CENTER  
**128.4 269.37**

UNICOM  
**123.05 (CTAF) 0**



SC-1, 16 APR 2026 to 14 MAY 2026

SC-1, 16 APR 2026 to 14 MAY 2026



CATEGORY	A	B	C	D
LNAV/VNAV DA	2001-1 1/8	416 (500-1 1/8)		NA
LNAV MDA	2060-1	475 (500-1)		NA
CIRCLING	2200-1	613 (700-1)		NA

MIRL Rwy 18-36 **0**