

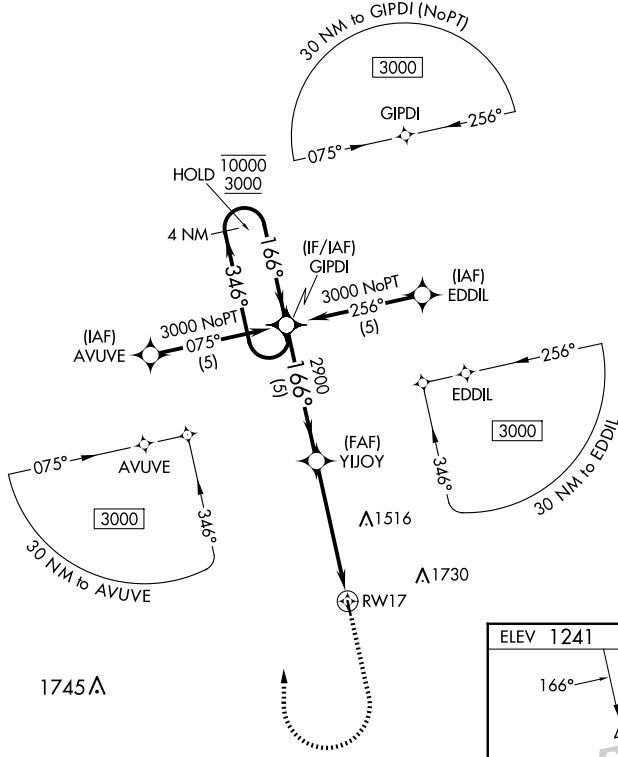
| | | |
|-------------|----------|-------------|
| APP CRS | Rwy Idg | 2998 |
| 166° | TDZE | 1241 |
| | Apt Elev | 1241 |

RNAV (GPS) RWY 17

SALEM MEML (K33)

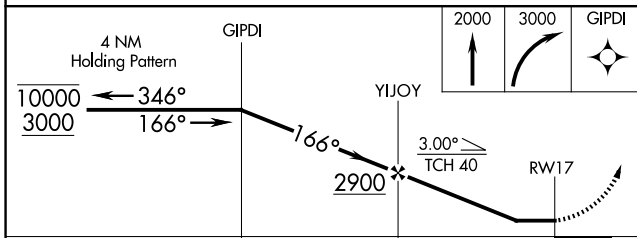
| | |
|--|--|
| RNP APCH - GPS. | MISSED APPROACH: Climb to 2000 then climbing right turn to 3000 direct GIPDI and hold. |
| <p>V Rwy 17 helicopter visibility reduction below 3/4 SM NA. When VIH</p> <p>Δ NA altimeter setting not received, procedure NA. Use VIH altimeter setting.</p> | |

| | | |
|----------------------------|---|----------------------|
| VIH ASOS 119.025 | KANSAS CITY CENTER 128.35 284.675 | CTAF 122.9 |
|----------------------------|---|----------------------|



| | |
|-----------|-----------|
| ELEV 1241 | TDZE 1241 |
|-----------|-----------|

Diagram of RWY 17 showing a 2998 x 60 ft runway with a 0.7% up slope. The runway is oriented at 166°. A 35 ft wide area is marked at the end of the runway.



| CATEGORY | A | B | C | D |
|----------|-----------------------|-----------------------|----|---|
| LNVA MDA | 1800-1 | 559 (600-1) | NA | |
| CIRCLING | 1840-1 599 (600-1) | 1940-1 699 (700-1) | NA | |

MIRL Rwy 17-35
REIL Rwy 17 and 35

NC-3, 16 APR 2026 to 14 MAY 2026

NC-3, 16 APR 2026 to 14 MAY 2026